

# OpenText Trading Grid

The industry's only unified integration platform delivered as a managed service

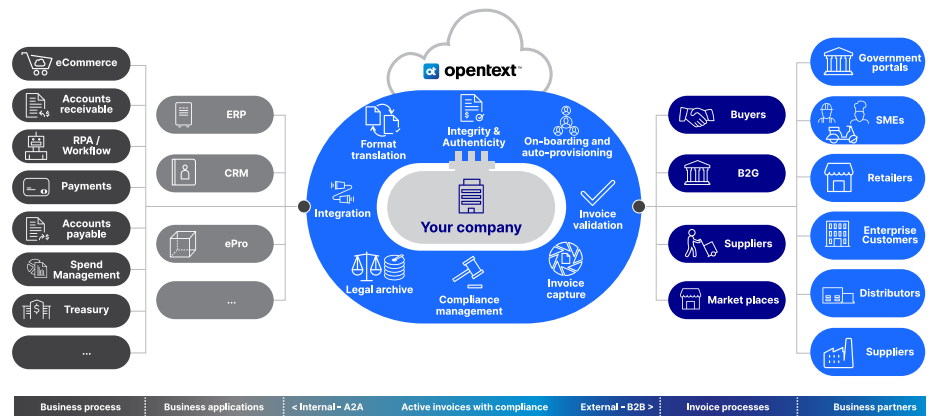
## Benefits

- Technology-enabled managed services combine OpenText expertise with powerful self-service technology
- Single unified platform supports a broad range of complex integration needs in an optimal way
- Power of the network enables leveraging connections to 1.2 million companies and 100s of applications
- Enabling the API (and everything else) economy allows embracing all forms of integration for optimal solution design

The nature of enterprise integration has changed. Modern companies increasingly need to integrate a diverse ecosystem of external systems including customers, suppliers, partners, 3rd party data sources and devices, as well as internal systems such as cloud and on-premises applications and data warehouses.

Connecting particularly those systems that are owned and hosted by parties outside the enterprise is straining existing integration tools and approaches, and most of them are failing. According to a study by IDC, only 52% of integration projects are delivered successfully on time and on budget<sup>1</sup>.

OpenText™ Trading Grid enables companies to manage this complexity by combining a modern, unified integration platform with a managed service delivery model to provide both the technical capabilities and specialist skills needed to get the job done. OpenText Trading Grid builds on decades of OpenText expertise in connecting external supply chain operations while adding modern data and application integration technologies to enable a true business-to-anything integration capability using a single platform. Connect once. Reach anything.



With OpenText Trading Grid, customers can successfully connect people, systems and things, optimize productivity, and grow their business.

## Integration solutions that deliver business value

Due to its unique combination of state-of-the-art integration technology, expert integration resources and powerful self-service features all packaged into a single solution, OpenText Trading Grid delivers complete solutions for connecting enterprise data and harnessing its power for optimizing and growing the business – We call this unlocking your information advantage.

### Solutions built on OpenText Trading Grid help companies to:

- Digitize communications with 100% of their trading community
- Automate and optimize business processes like procure-to-pay and order-to-cash
- Connect enterprise applications to automate data consistency and multistep processes
- Empower users and trading partners with managed APIs for accessing applications and data
- Gain near real-time visibility into your business processes and trading partner relationships

## OpenText Trading Grid

OpenText Trading Grid solutions consists of four elements including platform services, integration services, SaaS applications and managed services.



**opentext™**  
Trading Grid

### Managed Services

#### Development

Set-up, onboarding,  
configuration

#### Lifecycle Support

Monitoring, resolution,  
compliance, auditability,  
change management

#### Program Excellence

Program management &  
KPI reporting

#### Self-Service Experience

Onboarding, mapping  
and APIs

### Application Services (SaaS)

Community  
management

Data  
visibility

Data  
analytics

Global  
partner  
directory

Global  
e-invoice  
compliance

Data trans-  
formation

Order &  
invoice  
management

Deduction  
management

Catalogue  
management

API  
management

Data  
quality

Custom app  
development

### Integration Services

APIs

Applications

Communities

Data

### Platform Services

Sync/Async  
transactions

Global  
messaging

Protocol  
mediation

HA-DR  
Resiliency

Security &  
monitoring

Central data  
store

## Platform Services

Platform services include hosting and maintaining all OpenText Trading Grid cloud platform components and services that act as building blocks for the integration services and SaaS applications in line with the defined SLOs and performance requirements.

### Platform Services

<b>Global messaging</b>	Provides access to a network of 1.2 million connected organizations through a global partner directory to facilitate quicker and more efficient trading partner onboarding.
<b>Connectors and accelerators</b>	Includes an extensive library of application connectors and accelerators that act as templates for new integration development to improve speed and efficiency.
<b>Advanced workflows</b>	Supports flexible integration workflow development to enable advanced data processing and business rules that help increase process automation and streamline solution design.
<b>Integration patterns</b>	Supports multiple integration patterns including synchronous, asynchronous, and file-based integrations.
<b>Data formats and standards</b>	Enables translations between a broad variety of data formats including JSON, XML, flat file etc. and supports a variety of standards such as EDIFACT, ANSI X12, Tradacoms, RosettaNet, ebXML, Odette, SWIFT, VICS and others.
<b>Protocols</b>	Supports connections over various different protocols including HTTP/S, AS2, AS4, SFTP OFTP2, FTP/S and many more.
<b>Data management &amp; governance</b>	Enables validation, harmonization, aggregation and storing data to support complex integration logic, data warehousing and analytics initiatives.

# Integration Services

OpenText Trading Grid integration services include monitoring and managing the various types of integration flows as well as the related business logic and data retention policies required to meet the customer's business goals.

## Integration Services

### Community integration

Integrates trading partners by reconciling data structures and applying standards to digitize and automate business transactions. This can include discovering and documenting trading partner requirements to connect internal and trading partner systems, performing required data transformations, performing exception handling, issue resolution and notification services based on transaction messages, and connecting additional systems, applications and/or data sources to apply business logic and validate data.

### Application integration

Connects various enterprise applications—both in the cloud and on-premises—to make them work seamlessly together. This can include making data consistent across applications, supporting automation of multistep business processes that involve several applications, or creating composite applications and services that enable several applications to work as one to achieve the desired functionalities.

### Data integration

Moves data between different internal and external data sources by connecting, transforming, cleansing and enriching data to support various kinds of business processes and analytics initiatives. This can include extracting and ingesting data from various applications, systems and other data sources and combining it to create integrated datasets for data analytics, ensuring consistency of data across applications and other systems, and consolidating and synchronizing master data related to various business processes.

### API management

Enables creating and maintaining managed web APIs to expose enterprise data assets and services for different audiences such as internal application developers and external trading partners. This can include setting web APIs for accessing data contained in legacy systems, developing proxy APIs to improve governance over API access and request traffic, or creating developer portals to share API documentation and manage API key requests.

## Managed Services

OpenText Managed Services is the glue that weaves all of the OpenText Trading Grid solution elements together under a single service. This makes OpenText Trading Grid solutions easy to manage, provides comprehensive visibility into key service metrics and enables efficient collaboration between the customer and OpenText to anticipate and prepare for new integration projects and major changes in integration requirements over time.

### Managed Services

<b>Solution design &amp; development</b>	All solutions are delivered by OpenText professional services team including solution architects, business analysts, integration developers and other specialist resources that work closely with the customer to identify and develop an optimal solution in alignment with the customer's business requirements.
<b>Integration lifecycle support</b>	Integration monitoring and full lifecycle support are provided by OpenText support team. This includes support analysts as well as on-demand access to specialist professional services resources as required to address any process exception or error resolution case that may emerge.
<b>Program excellence</b>	Service reporting, change management, continuous service development and overall service coordination is performed by OpenText service management team who work closely with customer stakeholders to optimize solution delivery and anticipate any changes or adjustments that may be needed.
<b>Self-service experience</b>	To provide visibility into services provided and the ability to interact with the data that is being processed, OpenText Trading Grid offers rich self-service capabilities including data mapping, trading partner onboarding and various APIs that enable optimizing task sharing between OpenText professionals and customers business and IT staff.

# SaaS Applications

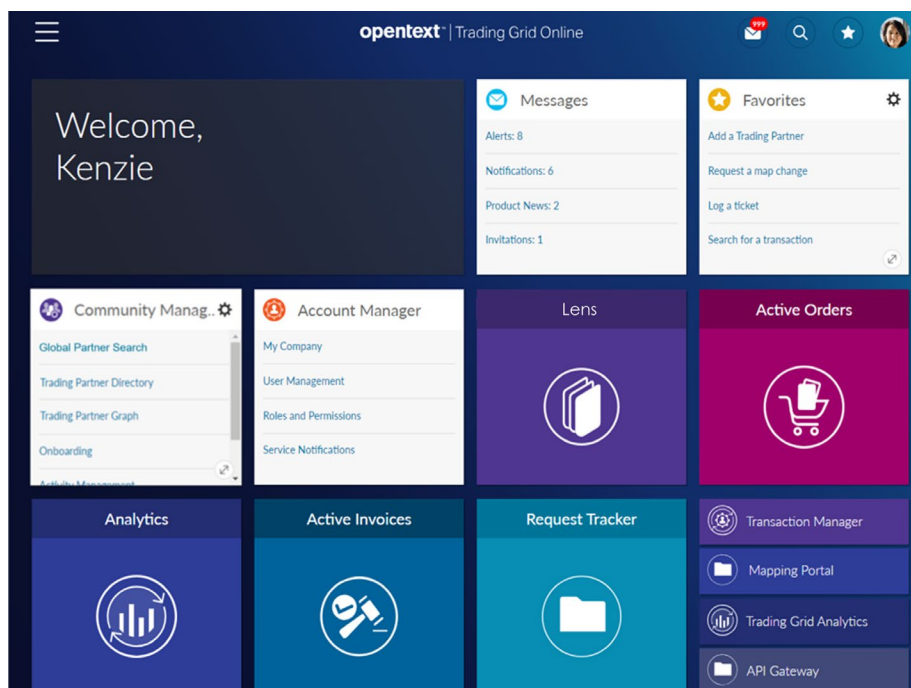
OpenText Trading Grid SaaS applications are a set of cloud applications that allow users to complete business tasks, interact with their data and monitor the data flows across their connected ecosystem.

## SaaS Applications

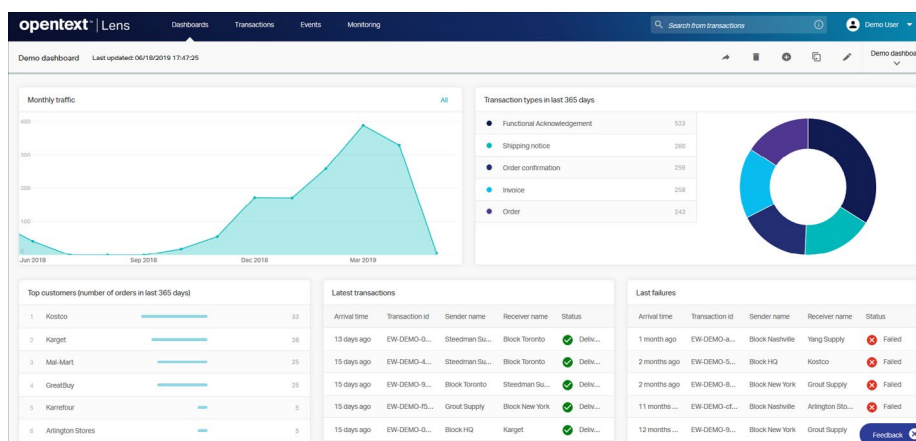
<b>OpenText Trading Grid Online</b>	Configurable single-sign-on (SSO) portal that allows accessing all OpenText Trading Grid applications and features extensive self-service capabilities for data mapping, onboarding, support and other tasks.
<b>OpenText™ Trading Grid™ Insights</b>	Enables viewing and exploring all integration flows on OpenText Trading Grid platform and setting up alerts & notifications on key business events.
<b>OpenText Trading Grid Analytics</b>	Provides out-of-the box and optional custom KPIs for business analysts and IT alike. Gain timely business insights including business and trading partner performance to mitigate risk and identify opportunities.
<b>Global Partner Directory</b>	Allows accessing OpenText's global database of connected organizations to find new business partners and onboard them as self-service or via managed services.
<b>OpenText™ Trading Grid™ e-Invoicing</b>	Automates electronic invoicing while complying with country-specific VAT rules, digital signatures and data retention.
<b>OpenText™ Trading Grid™ Supplier Hub</b>	Enables connecting non-digital partners to manage orders, invoices and shipping through one common solution.
<b>OpenText™ Trading Grid™ Catalogue</b>	Provides the capability to manage all product information (price, size, color, packaging, images...) leveraging GDSN compliant data models with 600+ product attributes.
<b>OpenText™ Trading Grid™ Intelligence</b>	Helps manage deductions and supplier shipment errors, improve vendor compliance and manage vendor relations and compliance.
<b>OpenText Trading Grid Solution Directory</b>	Allows browsing OpenText application connector library and accessing API management features like credentials management.
<b>Data Steward</b>	Provides visibility into and the ability to manage structured data, including self- service error remediation, reference data management and other complex data structure visualizations and editing.

## Resources

[Learn more >](#)



OpenText Trading Grid Online is the single sign-on portal for accessing all OpenText Trading Grid applications



OpenText™ Trading Grid™ Insights is an application for viewing both the live status and historical trends of all integration flows the customer has running on the OpenText Trading Grid platform