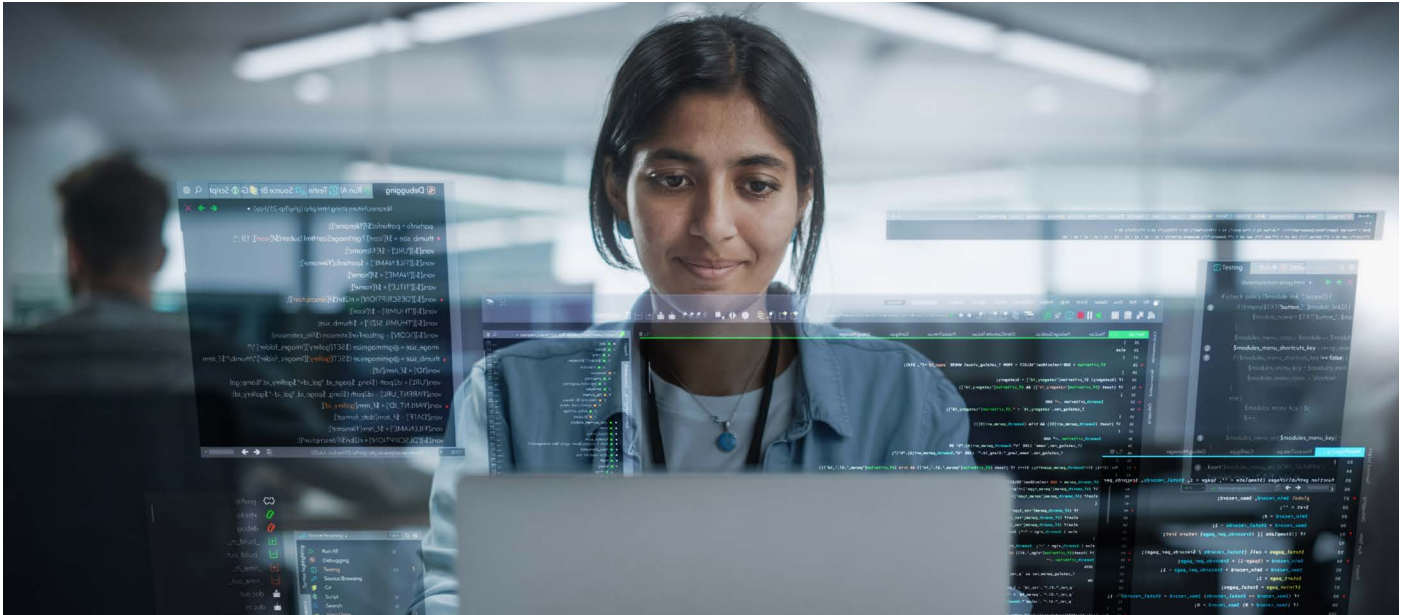


OpenText NetIQ Security Solutions for IBM i

Strengthen IBM i security with advanced access control, simplified user management, and enhanced protection for critical data and applications



Benefits

- Secure critical data with advanced access control
- Simplify user management to boost efficiency
- Optimize performance and improve service reliability
- Monitor and protect applications from security threats

Managing security on IBM i platforms is becoming increasingly challenging due to multiple access points and the need to protect sensitive, business-critical data. OpenText™ NetIQ™ Security Solutions for IBM i simplifies security management by providing centralized access control, enabling IT and security teams to effectively monitor and manage user permissions.

Enhanced Security for IBM i environments

Protect your critical business data with continuous monitoring and compliance enforcement. Streamline security management and simplify regulatory compliance to safeguard sensitive information effectively.

Proactive threat protection

Stay ahead of evolving threats with strengthened defenses and reduced administrative burden. Maintain control over multiple access points and complex user environments to mitigate risks efficiently.

Simplified compliance and reporting

Automate compliance reporting to easily track privileged user activity and generate audit-ready reports. Enforce security policies seamlessly, reducing audit fatigue and maintaining a robust security posture.

Simplified reporting on compliance with policies and standards

Allow security analysts and auditors to automatically evaluate and report on your servers with OpenText NetIQ Secure Configuration Manager templates.

- **Centralized access control** - Simplifies user access management by providing centralized control across IBM i systems.
- **Automated auditing and reporting** - Automates audits and reports to ensure compliance and meet security standards.
- **Role-based security management** - Offers precise role-based access control to protect sensitive data and resources.
- **Advanced encryption** - Safeguards data in transit and at rest using strong encryption protocols.
- **User activity monitoring** - Tracks and logs user activities for real-time threat detection and compliance verification.
- **Privilege escalation prevention** - Prevents unauthorized privilege escalation with robust security measures.
- **Integration with existing systems** - Easily integrates with existing IBM i environments for streamlined security management.

Centralized user access control

Ensure least-privilege access with granular security controls and real-time monitoring of privileged accounts. Reduce the risk of unauthorized access and data breaches by managing user permissions effectively.

Continuous security monitoring

Gain real-time visibility into security events with continuous monitoring, logging, and intrusion prevention. Proactively identify and address vulnerabilities to maintain operational integrity and prevent costly incidents.

Streamlined compliance

Quickly identify and archive obsolete and inactive users, easily produce audit reports, and track privileged user activity to help meet requirements such as the PCI DSS, HIPAA and EU Privacy Directive.

Security enforcement

Implement the least-privilege model to reduce risk and protect sensitive data. Respond to both attacks and policy violations with real-time intrusion protection.

Protection for IBM i platforms

Quickly and effectively lock down your OS/400 and i5/OS systems through the application of strong access controls at both the network and object security levels.

Simplified user administration

Reduce the time spent synchronizing user profiles and passwords with secure user administration across multiple servers.

Security Solutions for IBM i significantly enhance security management beyond native IBM capabilities. Our products offer deeper permissions and superior object-level security management, ensuring a uniform approach to profile management. With management-by-exception reporting, we reduce information overload and provide consolidated reporting across LPAR and IBM i servers.