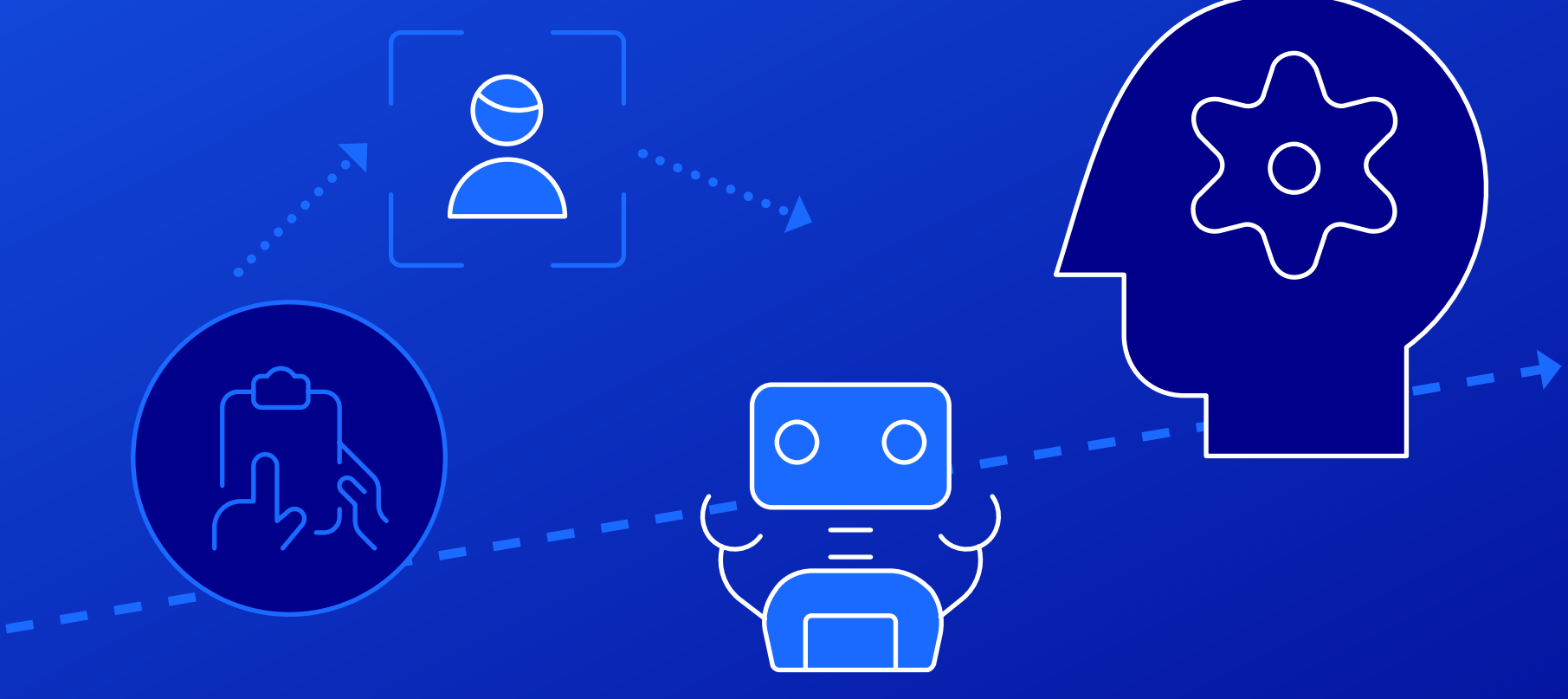


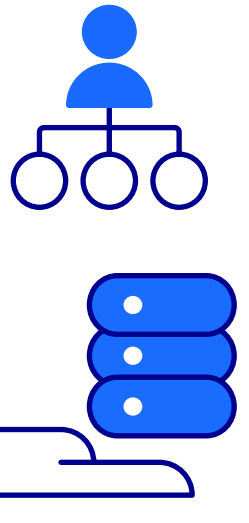
Tired of performing manual identity management true-ups?

With the right solution you don't have to.



While organizations continue to rely on Microsoft® Active Directory and Entra® ID as their authoritative entitlement store, they do so with mixed results.

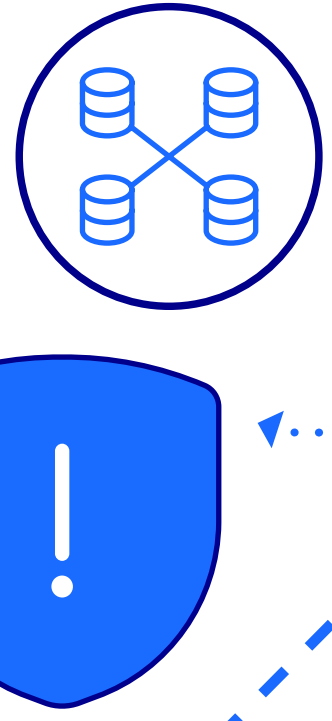
Active Directory is only as authoritative as you make it—most environments have identity stores scattered throughout that need to be fully managed and integrated to minimize customized processes.



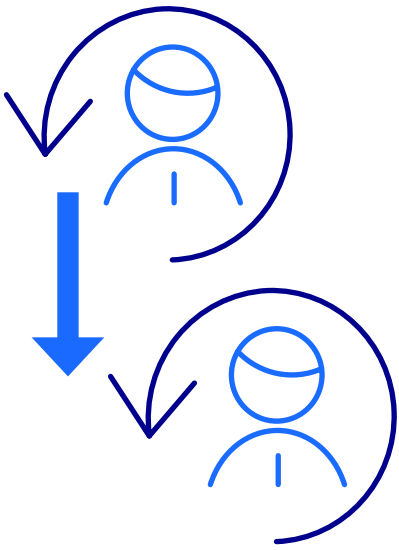
An effective organizational identity fabric enables business processes while enforcing security requirements at every point where identity entitlements can be changed.



Focusing on Microsoft Active Directory as the center of identity management can lead to disparate permissions to access sensitive information.



Organizations that use competing identity management solutions need to perform manual true-ups to keep their environment secure and compliant.



OpenText™ Core Identity Foundation fully manages all your identity stores, even your edge ones.



[Learn more](#)