

OpenText™ Library Management

Manage physical and digital collections together

Enterprise libraries are evolving to expand services and find new ways to increase the value and visibility of their collections. Managing books, journals, audiovisual, and other physical materials, along with enterprise knowledge assets and published digital content, makes both more useful. Fully integrated management of physical and digital collections improves research outcomes to sustain innovation; at the same time expanding operational efficiency of library staff.

OpenText Library Management is an integrated library system with modules to support acquisitions, cataloging, circulation and serials tracking functions. Engineered for today's corporate libraries, Library Management provides a platform to manage digital collections, enterprise knowledge assets and multimedia, along with traditional print materials.

Maximize Collection Usage and Accelerate Innovation

Consolidated access and precise search inspires researchers to properly investigate the diverse collections organized by library. Using alternate ranking methods and faceted navigation to facilitate knowledge discovery, library users find the information they need to develop new ideas and accelerate the pace of innovation across the entire organization.

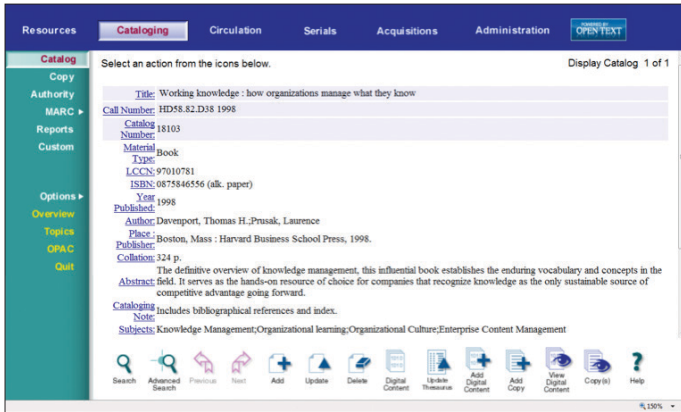
The end-users' research platform, OpenText Library Management Webtop OPAC, lets users search for words and phrases in catalog records and within the text of digital content at the same time. Context-aware indexing ensures the highest degree of search precision possible; search assistants support thesaurus look-up and index browsing with term selection and interactive cross-referencing to redirect a search to the preferred form. Item request options ensure that users receive the information they need, whether it is in electronic or print form.

Modular for Service Focus

The cataloging module is the center of Library Management, where library staff find, add, update, and delete catalog and copy records with simple web-based forms. Interactive authority control validates headings to expand access. Machine-Readable Cataloging (MARC) and non-MARC data coexist to manage all types of content.

PRODUCT SUMMARY

OpenText Library Management is an integrated library system with modules to support acquisitions, cataloging, circulation and serials tracking functions. Engineered for today's corporate libraries, Library Management provides a platform to manage digital collections, enterprise knowledge assets and multimedia, along with traditional print materials.



With the Library Management Cataloging module, library staff can search and view a catalog record and select any needed action.

The integrated digital collections features let you attach electronic content to catalog records. All digital content is fully indexed to enhance the search experience. Users can immediately answer their question by viewing documents, reviews, or tables of contents. Additional modules further extend control over the collections to advance library service.

The circulation module monitors the physical inventory and item reservations. The Library Management acquisitions module automates order processing and receiving, and includes convenient search options to support status enquiries, identify claims, and process invoice payments. The serials module controls issue prediction, receiving, and routing distribution. Library staff can define journal publication patterns using the flexible issue prediction page.

Library Management uses OpenText Collections Server as the content repository to store, control, index, and access the bibliographic and full-text content. Collections Server ensures the retrieval, security, validation, and data integrity of the collection. Standard application programming interfaces can be used for customization or to integrate with other enterprise systems.

A Trusted Knowledge Resource

Library Management can be deployed standalone or combined with the OpenText Content Suite. Using Library Management with OpenText Content Server, empowers library staff to unify business content with library-managed collections in a common, collaborative workspace. This consolidated environment facilitates knowledge discovery, maximizes the value of research content, and significantly extends the reach of the library as an integral part of the enterprise knowledge architecture.

Features and Benefits

- **Configurable.** With Library Management, you define system- and library-specific settings, including staff privileges, library locations, patron types, and loans policy.
- **Add value.** Supplement cataloging with full-text documents, reviews, cover art and more to make digital collections more accessible.
- **Authority control.** Ensure data integrity in cataloging with authority control implemented via an ANSI standard thesaurus.
- **Responsive.** Address local reporting needs using report templates and an open source report toolkit.
- **Web accessible.** Fully browser-based in all modules, using three-tiered architecture with web client, a Microsoft® Windows® application layer, and repository services running on Windows, UNIX® or Linux®.

Reliable Customer Support

Library Management is developed by professional librarians who understand the demands on today's library. OpenText provides multiple support channels for your convenience, phone and email assistance, plus extensive online resources. Consulting Services and Educational Services are available to help customers optimize their implementation and their document collections.

www.opentext.com

NORTH AMERICA +800 499 6544 • UNITED STATES +1 847 267 9330 • GERMANY +49 89 4629-0
 UNITED KINGDOM +44 (0) 1189 848 000 • AUSTRALIA +61 2 9026 3400