

OpenText™ Information Hub (iHub)

Increase the value of your applications with real-time, interactive, highly scalable analytics and appealing visualizations, reports and dashboards



Create **user-friendly** reports, dashboards and visualizations



Embed analytics **quickly and seamlessly**



Enable self-service data exploration with **minimal need for IT**

In a digital world, organizations demand analytics-powered applications that deliver insights and information, and empower employees, customers and partners to take action. Organizations want to use big data from a wide range of sources to understand their customers and increase engagement and loyalty. IT teams want to deliver high-scale, mobile-ready, self-service analytics enhanced with interactive reports and visualizations. Users, meanwhile, want to connect with their information and complete important tasks quickly on any device.

OpenText Information Hub (iHub) addresses these requirements. It provides users with relevant information in context and empowers them to make data exploration a part of their day-to-day experience.

iHub is a highly scalable, enterprise-grade deployment server for secure interactive analytic applications. Within the OpenText Analytics Suite, it's the foundation for delivering custom stand-alone and embedded visualizations.

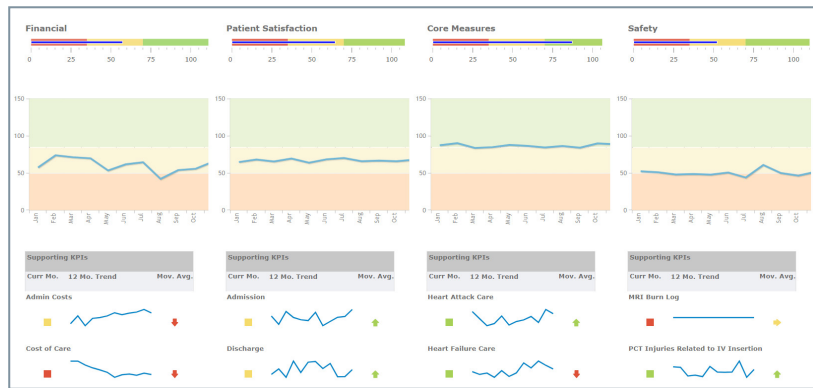
iHub enables users to design, deploy and manage secure, interactive web applications and reports and dashboards fed by multiple data sources. It supports high volumes of users and its integration APIs (including REST and JavaScript) allow for easy embedding of content into any application. iHub displays optimally on any device, intelligently resizing and repositioning its results on both mobile and desktop screens. It's easy to deploy either on-premises or in the cloud.

Features

- Explore data using interactive features such as drill-downs, sorting, filtering and aggregating
- Connect and combine multiple data sources and formats
- Use a broad range of APIs, such as REST and JavaScript, to integrate analytics into any application
- Work offline in PDF or Microsoft® Office formats (Excel®, Word and PowerPoint®)
- Get visualization options for every type of user, from casual to sophisticated

By providing all users with real-time information and self-service business analytics as part of their day-to-day experience, iHub meets business-critical requirements. It enables dashboard creation and ad-hoc report authoring in a flexible environment designed to drive user autonomy. Its high scalability supports delivering customer-facing applications to millions of users at a time, even under peak website demand.

iHub transforms any data into meaningful insights with relevant, appealing graphics and visualizations, from bar or ring charts to word clouds, so users can easily see and understand the information trends. Businesses can embed these personalized analytic dashboards and interactive visualizations into their own applications, workflow and processes for maximum impact.



iHub gives organizations a 360-degree view of their performance.

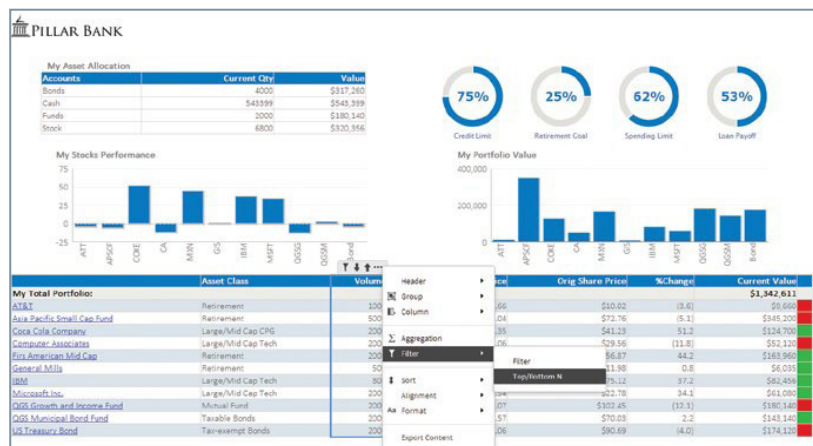
Visualization options for every level of self-service access

iHub is equipped with data reporting and display features that enable a full range of self-service capabilities for any user, regardless of their skill set.

Depending on the level of interactivity and data blending needed, users can choose from built-in functions that emphasize simplicity and ease of use (OpenText™ Interactive Viewer), visual appeal to showcase key indicators (OpenText™ Dashboards) or sophisticated, powerful reporting with the ability to add new data sources on the fly (OpenText™ Analytics Studio).

Quick, convenient data exploration with OpenText Interactive Viewer

Interactive Viewer is an easy-to-use viewing option pre-packaged with iHub. Within a few minutes of being introduced to the intuitive interface, even the most non-technical users can start accessing and customizing their content for their own needs and preferences. They can modify, save and share reports, dashboards and data visualizations with just a few clicks.



OpenText services available

- Learning Services iHub
- Managed Services
- Consulting Services
- FasTrak Implementation Services for iHub

Updates at a glance with flexible OpenText Dashboards

For a richer reporting experience, the Dashboards component aggregates multiple data sources and serves up real-time results in appealing graphic visualizations that put data at users' fingertips. Designed to be used without training, Dashboards are quick to assemble, personalize and share. State-of-the-art charts, gadgets, tables and graphical selectors allow users to illustrate and explore their data without IT support.



Full-featured ad-hoc reporting for business users with OpenText Analytics Studio

Analytics Studio provides the most powerful ad-hoc reporting design options. Drag-and-drop functionality in this integrated development environment allows advanced users to assemble and format reports for personalized business insights. They can blend, transform and apply business logic to their data, add new sources on the fly and effortlessly create ad-hoc reports in the browser. Analytics Studio includes hundreds of HTML5 charts, gadgets and maps; commercial data drivers; a metadata layer and cube design; and caching features for creating interactive and analytic content.

OpenText Analytics Suite: Delivering more insight from your data

iHub is a key component of the powerful, flexible OpenText Analytics Suite, along with Big Data Analytics, the three visualization modules (Interactive Viewer, Dashboards and Analytics Studio) and optional capabilities for multi-tenancy, page-level security and Accessible PDF creation.

As an integrated whole, the Analytics Suite helps organizations gain insight, improve decision-making and boost operational efficiency by providing hands-on access to interactive dashboards, reports and data visualizations, seamlessly integrated with big data-capable advanced and predictive analytics to spot patterns and trends.

Leveraging all data—whether it comes from databases, business applications, CRM records, Internet of Things or social media—in relevant, interactive visualizations on any device increases opportunities for growth. Analytics Suite offers robust, enterprise-level security, scalability to millions of users and data integrity, while requiring only minimal IT intervention.

OpenText™ Magellan™: Adding the power of AI to analytics

Magellan provides "next-level" capability and is a natural extension of Analytics Suite. It's a powerful, flexible AI and analytics platform that derives insights from both structured and unstructured data, spotting key topics, people, events, concerns and other crucial information in text.

OpenText Information Hub components

OpenText Information Hub (iHub)	Design, deploy and manage secure, interactive web applications, reports and dashboards fed by any data source in any format. Embed analytic content into any application, displayed on any device.
OpenText Interactive Viewer	An intuitive, user-friendly viewing option packaged with the Analytics Suite. Modify, save and share reports, dashboards and data visualizations with just a few clicks.
OpenText Dashboards	For a richer reporting experience, use Dashboards to aggregate multiple data sources and serve up real-time results in appealing graphic visualizations. Users can illustrate and explore data without IT support.
OpenText Analytics Studio	With the most powerful ad-hoc reporting design options, assemble reports with drag-and-drop ease. Blend and explore data, add new sources on the fly and create personalized reports within the browser.

[↓ Download the trial](#)

[☰ Read our blog](#)

[🐦 @OT_Analytics](#)

[↗ Learn more](#)

[Information Hub »](#)

[Read about customer](#)

[MRDM »](#)

Squeeze every drop of value from data

Magellan combines cutting-edge, open source machine learning with advanced, predictive analytics, enterprise-grade business intelligence and the capacity to acquire, merge, manage and analyze big data and big content stored in Enterprise Information Management systems.

Magellan enables machine-assisted decision-making by automating repetitive, low-level processes and business optimization. As a result, organizations can streamline operations, respond more quickly to changing needs and operate more profitably.