

OpenText™ Accelerate™

End-to-end eDiscovery and investigations platform



Simplify eDiscovery with end-to-end functionality in a single platform



Increase efficiency and cost-savings with powerful built-in analytics and technology-assisted review



Substantially reduce risks



Deploy with flexibility

The explosion of data volumes and sources, heightened regulatory requirements and cybersecurity risks are driving up the costs and risks of eDiscovery, investigations and regulatory compliance mandates. And while litigation budgets are under scrutiny with demands for cost containment, legal teams are expected to deliver superior results, on time. To achieve efficiencies and cost-savings, while delivering superior results, legal teams are looking to end-to-end solutions with integrated analytics, machine learning and automation.

OpenText™ Accelerate™ is a flexible and powerful end-to-end eDiscovery and investigations platform built from the ground up around proprietary advanced analytics, machine learning and automation. Accelerate delivers best-in-class investigative capabilities in a fully integrated, intuitive review interface that helps get legal teams the facts that matter sooner and inform their case strategy. Accelerate empowers users to take greater control over the process— from ingesting, collecting data and culling intelligently and automating as many manual tasks as possible, to reviewing only what is necessary.

Simplify eDiscovery with end-to-end functionality in a single platform

Accelerate streamlines and simplifies eDiscovery and investigations, integrating data exploration and identification, collection, processing, analysis, review and production in

a single platform, delivered by a single vendor. Accelerate's early case assessment (ECA) functionality allows users to collect from ECM systems, cloud repositories, and other data sources, process, de-NIST and deduplicate data, and quickly cull document collections for early insight into potential costs and risks of the case. Integrated analytics and review capabilities are designed for a streamlined process that quickly surfaces relevant content.

Increase efficiency and cost-savings with powerful built-in analytics and technology-assisted review

Built-in data analytics and technology-assisted review capabilities provide legal teams with early and important insight to quickly understand and intelligently organize the data to maximize review efficiency and cost savings by minimizing the overall volume of documents warranting legal review. Analytics and machine learning features include:

- Technology-assisted review based on machine learning prioritizes the relevant documents for review.
- Predictive filters reveal from human review decisions to predict the search terms and parameters that are most likely to uncover valuable insights, such as which content stores are likely to contain relevant information;
- Predictive searching surfaces conceptually similar documents on-the-fly without requiring a full TAR workflow;
- Advanced phrase and concept analysis intelligently organizes documents to further speed review;
- Stackable Smart Filters leverage a wide range of metadata to efficiently narrow in on relevant content;
- Sentiment analysis and automated identification and extraction of people, places and organizations provide insight into commonalities and patterns amongst the documents;
- Hypergraph Communications Map provides an intuitive way to see who is communicating with whom;
- Sentiment and phrase analysis provides additional insight into the meaning and intent of communications and content; and,
- Automated document summaries provide users with quick understanding of the document's content.

Substantially reduce risks

Integrated capabilities and standardized processes minimize the risk of missing critical information or inadvertently disclosing privileged, sensitive or private information. Features include:

- Automated data detection finds for PII, PCI and PHI;
- Automated entity extraction locates people's names unrelated to a data privacy rights request;
- Bulk redaction capabilities streamline the process and ensures that redactions are applied consistently across the dataset; and,
- Self-triggered quality assurance checks help assure risk-free production.

“After a thorough competitive review, we chose OpenText Axcelerate. We were impressed with its predictive coding technology and foreign language support.”

Siemens Corporation

[Read the full Success story](#)

“No other platform matches OpenText Axcelerate's combination of power and usability for high-stakes review.”

Bennett Borden

Drinker Biddle & Reath LLP

[Read the full Success story](#)

“OpenText Axcelerate changes the way that we investigate. It has become a much more intuitive and iterative process. We're embedding that in the culture of our investigations now.”

Richard Day

Serious Fraud Office

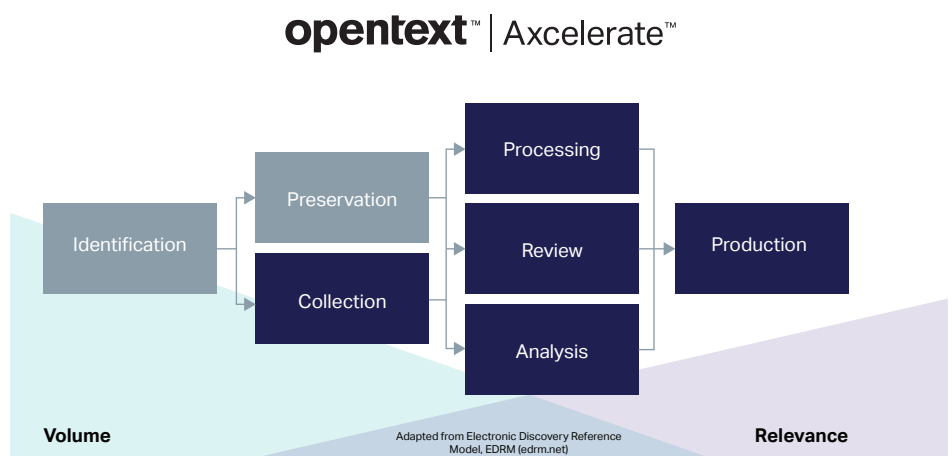
[Read the full Success story](#)

Deploy with flexibility

Axcelerate provides the flexibility enterprises seek when it comes to managing and securing sensitive data, offering various deployment options:

- On-premises server-based solution: Axcelerate can be deployed completely on-premise with data ingestion, processing, ECA, review and production capabilities all behind the corporate firewall, with high scalability for data volumes, active matters and number of users.
- Cloud-based on-demand model for single matters or as a subscription model: Axcelerate provides enterprises with a fully inclusive, subscription-based access to Axcelerate's powerful analytics, machine learning and review capabilities in an ultra-secure cloud infrastructure with flexible service options.
- Hybrid approach: Axcelerate can also be deployed as a hybrid solution with Axcelerate ECA installed on-premise and Axcelerate analytics and review capabilities running in the cloud. With one click, data can be transferred from the on-premise environment to the cloud for review.
- Air-gapped temporary portable solution: Axcelerate Portable Solution is an appliance-based full instance of Axcelerate for temporary, on-site projects (e.g., to protect against cyber threats and comply with data privacy and country- or location-specific data privacy requirements).

- Forensic collections
- Axcelerate Portable Solution
- High-efficiency managed document review
- Multi-language translation and review
- Technology-assisted review consulting
- Legacy data management
- Project management
- OpenText™ Managed Services



OpenText Axcelerate features

Connectors	Extensive turn-key connectors to general databases, directories, file systems and content management platforms (available only for Axcelerate on-premises installations).
Multi-faceted concurrent search	Powered by OpenText™ MindServer™, AI-enhanced search that allows for multiple concurrent queries to be conducted, saving time from running sequential individual searches and producing more accurate results.
Early case assessment	Create highly targeted data sets to speed time to review, with processing, OCR, deduplication and de-NISTing. Organize documents into families by content similarity.
Machine translation	Execute automated machine translations in minutes, powered by Veritone aiWARE™, from inside Axcelerate to translate dozens of languages into English, including European and Asian languages. Only extracted text is transferred for translation to maintain the security and integrity of native files.
Smart filters	Rapidly isolate key data with dozens of stackable filters based on metadata, content and customizable work-product.
Predictive filters	Find relevant data faster with predictive filters, which learn from human review decisions to predict the search terms and parameters that are most likely to uncover valuable insights, such as which content stores are probable sources of relevant content, what content is most likely to be privileged and which custodians are most likely to have relevant documents.
Predictive search	"Find more like me" with technology-assisted review functionality on the fly, without any workflow or sampling requirements. Compare documents known to be relevant against the entire corpus, or execute search queries and use selected results to find other documents with similar content.
End-of-branch email analysis	Limit review to the most inclusive emails at the end of each branch and spot any missing or unique messages for dramatic time savings.
Browser-agnostic viewer	View documents in any browser with hi-fidelity rendering, efficient pre-caching and smart tagging controls.
Automated data detection and redaction	Auto-identify sensitive content in any identifiable pattern, such as PII, PCI, PHI and NPI, and automatically redact it in bulk before review or production.
Visualization	Highly accessible visualized display of potentially relevant content with key indicators and criteria clearly presented to facilitate fast and accurate review.
Hypergraph communications map	Analyze parties, domains, activity levels and timeframes around all communications of interest while visualizing email and chat connections.
Technology-assisted review	Prioritize the most relevant content for review with continuous machine learning.
Review tools	Review faster with review workflows, batch management, tagging and foldering and other features to speed the review.
Document summaries	Display a concise summary of the core themes and content within documents in a paragraph or two for quick understanding of what the document is about.
Phrase analysis	Search with precision and breadth by easily including or excluding two- to four-word phrases across the dataset. Phrase analysis helps legal teams narrow results and discover terms they may have missed.

OpenText Axcelerate features

Negative proximity operator

Reduce false hits by ignoring keyword matches when the second term is used extraneously (e.g., in email signature lines). Only returns term1 keywords if they are a specified number of words away from term2 keywords.

Concept analysis

Group documents based on the contextual meaning of associated common phrases, allowing reviewers to gain context beyond keywords and code names.

Sentiment analysis

Gain a faster and deeper understanding of data by categorizing documents by whether they contain positive, negative or neutral sentiments.

Entity identification

Achieve additional layers of insight for communications analysis and investigations. Axcelerate Smart Filters include integrated detection tools that automatically surface the names of people, places and organizations.

Multilingual analytics

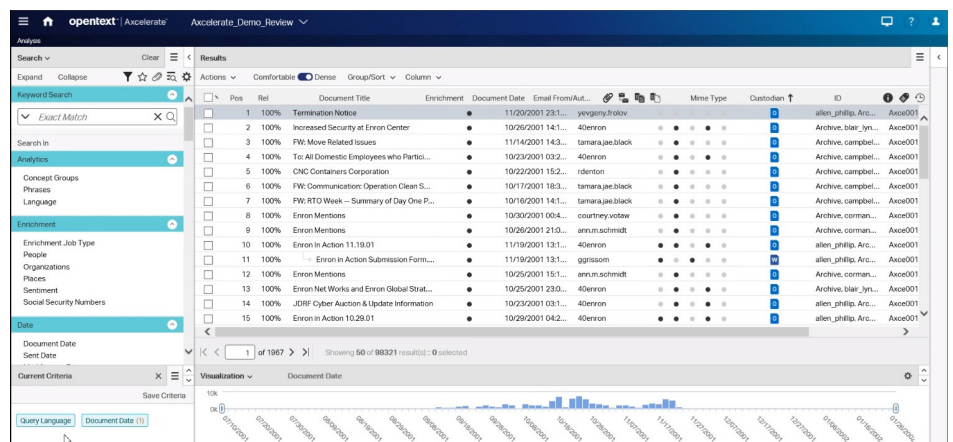
Enrich unstructured data with powerful analytics on a language-agnostic basis, including pictorial languages like Chinese, Japanese and Korean.

Production wizard

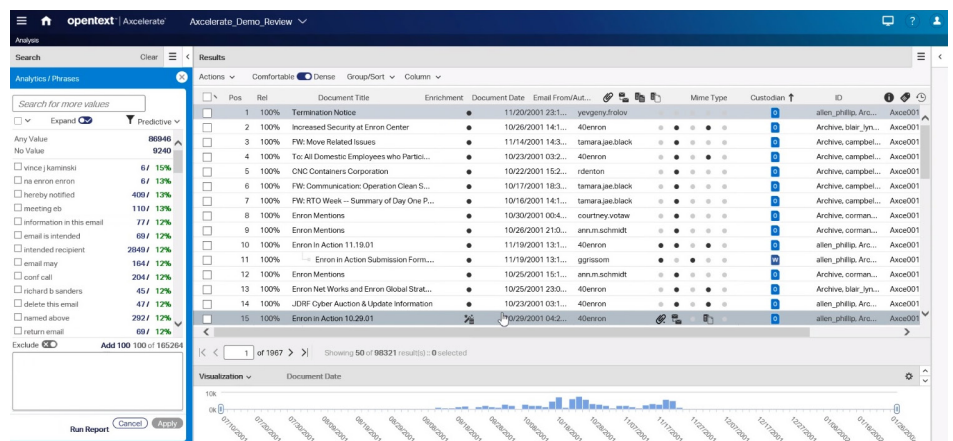
Select from pre-configured options for how the discovery set is presented.

BI dashboards

Monitor and share review progress with interactive dashboards, track project data down to the individual coding decisions or see aggregated trends across entire case portfolios. Get critical insights for caseload management and budget.



Rapidly isolate key data with Smart Filters



Search with precision and breadth to narrow results and discover previously uncovered themes with Phrase Analysis

➔ OpenText Discovery solutions

➔ OpenText Discovery Professional Services

➔ OpenText Axcelerate Collection Services

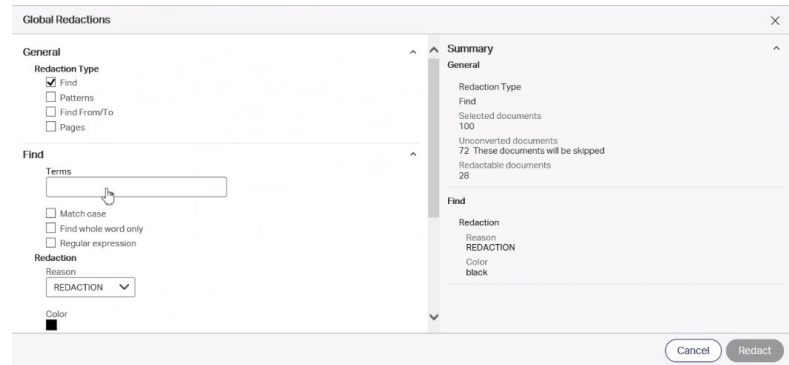
➔ Optimizing data subject access requests (DSAR) with OpenText Axcelerate

➔ OpenText Axcelerate Portable Solution

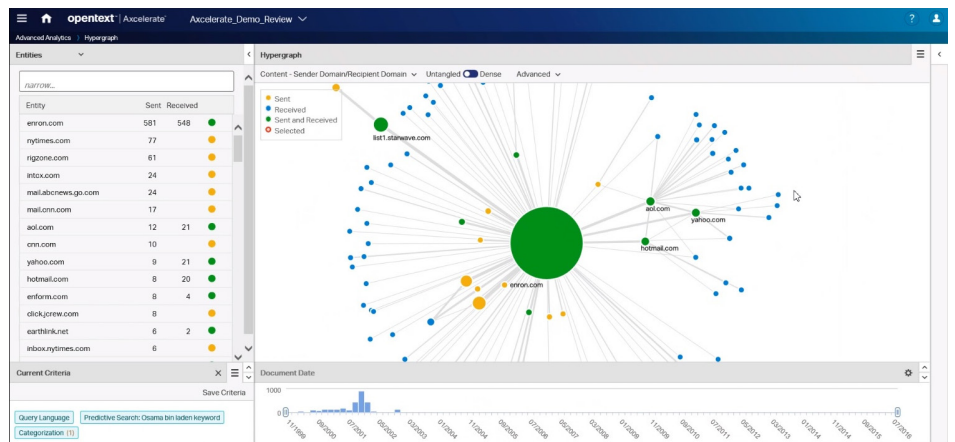
➔ OpenText High-Efficiency Managed Review

OpenText Axcelerate Connectors

- OpenText™ Content Server
- OpenText™ eDOCS
- OpenText™ Documentum™
- Microsoft® Exchange
- Microsoft® Sharepoint®
- Microsoft® OneDrive
- Microsoft® Office 365®
- IBM® Content Manager®
- Concordance®
- iManage™
- Atlassian®
- Confluence
- Box™



Automatically redact sensitive data in bulk before review or production



Analyze parties, domains, activity levels and timeframes for all communications of interest with hypergraph communications map