

OpenText™ Exceed™

Securely and reliably connect Windows® and Citrix desktops with X Window applications

OpenText Exceed is the right choice for organizations that access X Window applications from Microsoft® Windows desktops or Citrix clients. Exceed is certified for Windows 8 and Citrix Ready™.

Exceed is used by large enterprises in industries such as financial services, retail, and manufacturing as well as SMBs and small departments within large organizations. It is the premier solution for high-end X Window applications such as CAD/CAM design, medical devices, seismic analysis, and information visualization. Our latest release of Exceed as part of the Connectivity 15 suite features enhanced security and performance for faster connections and greater protection of sensitive data on open networks.

Versatility in a Client/Server Environment

Renowned for its performance, stability, accuracy, and ease of use, Exceed transforms your computer into a fully functional X Window terminal. It integrates your Windows desktop with environments such as UNIX®, Linux®, VMS®, X Window System™, IBM® mainframes, and the Internet.

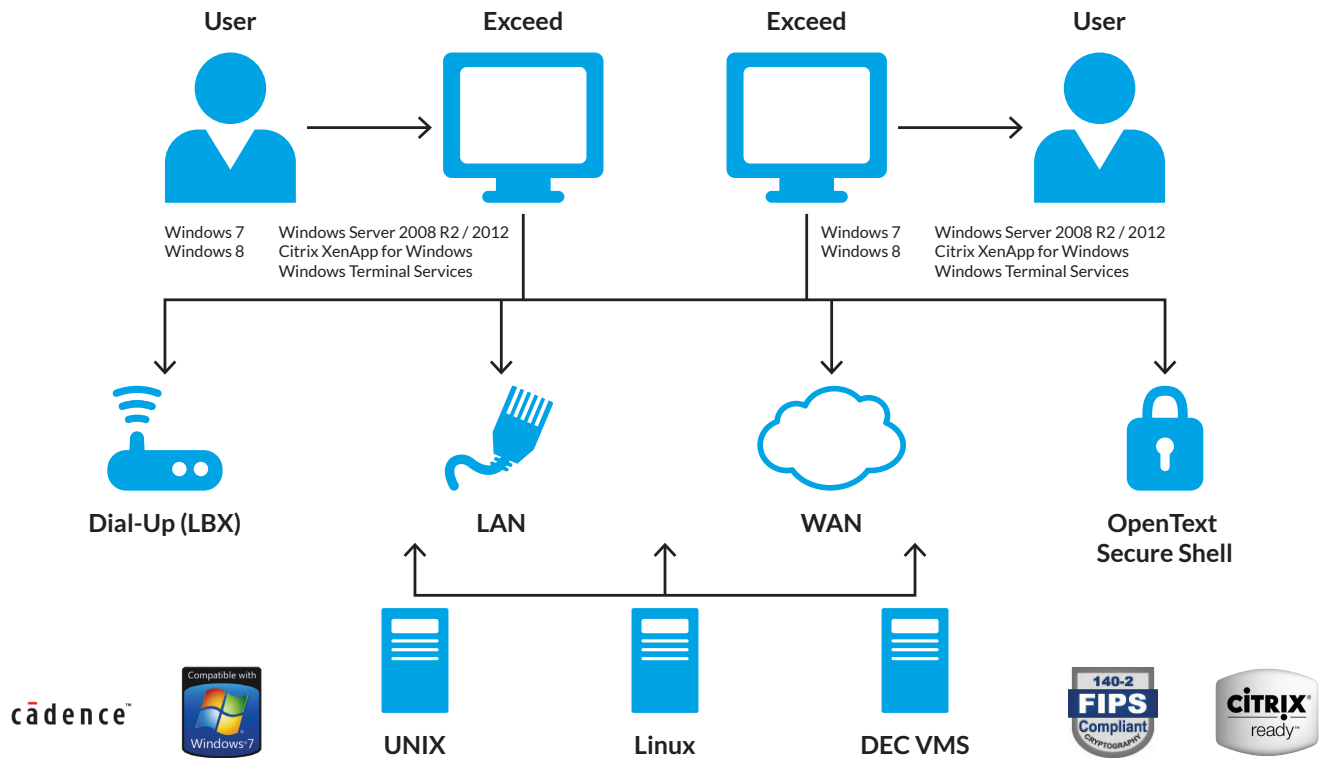
Use Exceed on local PCs to:

- Access powerful applications and information running on networked hosts.
- Establish simultaneous connections to different computers running X clients.
- Use an X window manager to display a familiar visual interface from your X environment.

Integrated with OpenText HostExplorer™, a powerful terminal emulation package, and OpenText Secure Shell, an optional security suite, Exceed is also the most versatile enterprise connectivity software available.

PRODUCT SUMMARY

OpenText Exceed is a secure, high-performing X Window server that connects Microsoft Windows desktops to high-end X Window applications running on UNIX and Linux servers. Integrated with OpenText HostExplorer and OpenText Secure Shell, Exceed is also the most versatile enterprise connectivity software available.



SPECIFICATIONS

CERTIFICATION	<ul style="list-style-type: none"> Compatible with Windows 7 & 8 	<ul style="list-style-type: none"> Citrix Ready 	<ul style="list-style-type: none"> FIPS 140-2 Compliant
X SERVER	<ul style="list-style-type: none"> Native 64-bit support for Microsoft Windows x64 family and Windows 7 Support for X11R7.7 	<ul style="list-style-type: none"> Support up to 254 X clients per session Interactive support for password—aging events 	<ul style="list-style-type: none"> Local X support – X clients, window management, font RGB, xrdp, X-Trace Extensive server visual and multiple color depths
SUPPORT	<ul style="list-style-type: none"> Support advanced input devices including SpaceBall 5000™ and SpacePilot™ Support for multi-touch displays and Windows 8 gestures 	<ul style="list-style-type: none"> Multiple monitors and screens support—up to the maximum supported by the GPU Full screen toolbar and docking / undocking support Support for local and remote window managers 	<ul style="list-style-type: none"> Support roaming profiles Double byte character set support Remember Session information for speedy restart
SECURITY	<ul style="list-style-type: none"> Secure Shell 2 support through the optional security package OpenText Secure Shell* 	<ul style="list-style-type: none"> Support for smart card and PIV authentication Support for the latest FIPS compatible 256- and 512-bit ciphers for SSH connections 	<ul style="list-style-type: none"> Support for SSL v2/3 & TLS 1.2 and Kerberos v4/5 Advanced host- and client-based security
FONT SUPPORT	<ul style="list-style-type: none"> Support for Unicode and TrueType font encodings 	<ul style="list-style-type: none"> Support .enc font encoding X11R5 RS/X11R6 font servers 	<ul style="list-style-type: none"> Automatic font substitution and font server reconnection
DEPLOYMENT	<ul style="list-style-type: none"> Support for multiple profile locations Support for LDAP corporate directories 	<ul style="list-style-type: none"> Microsoft Windows Installer Technology (MSI)—supports SCCM and other automated deployment tools 	<ul style="list-style-type: none"> Integrated tool to customize MSI packages (SMS compatible)
STARTUP & CLIENT LAUNCHING	<ul style="list-style-type: none"> Passive mode XDMCP (query, Indirect, Broadcast) 	<ul style="list-style-type: none"> REXEC, RLOGIN, RSH, TELNET, Secure Shell* 	<ul style="list-style-type: none"> Ability to disable insecure protocols and only enable SSH connections*

* Requires OpenText Secure Shell

<http://connectivity.opentext.com>

SALES • CONNSALES@OPENTEXT.COM • +1 905 762 6400 • 1 877 359 4866
SUPPORT • SUPPORT@OPENTEXT.COM • +1 519 888 9933 • 1 800 540 7292