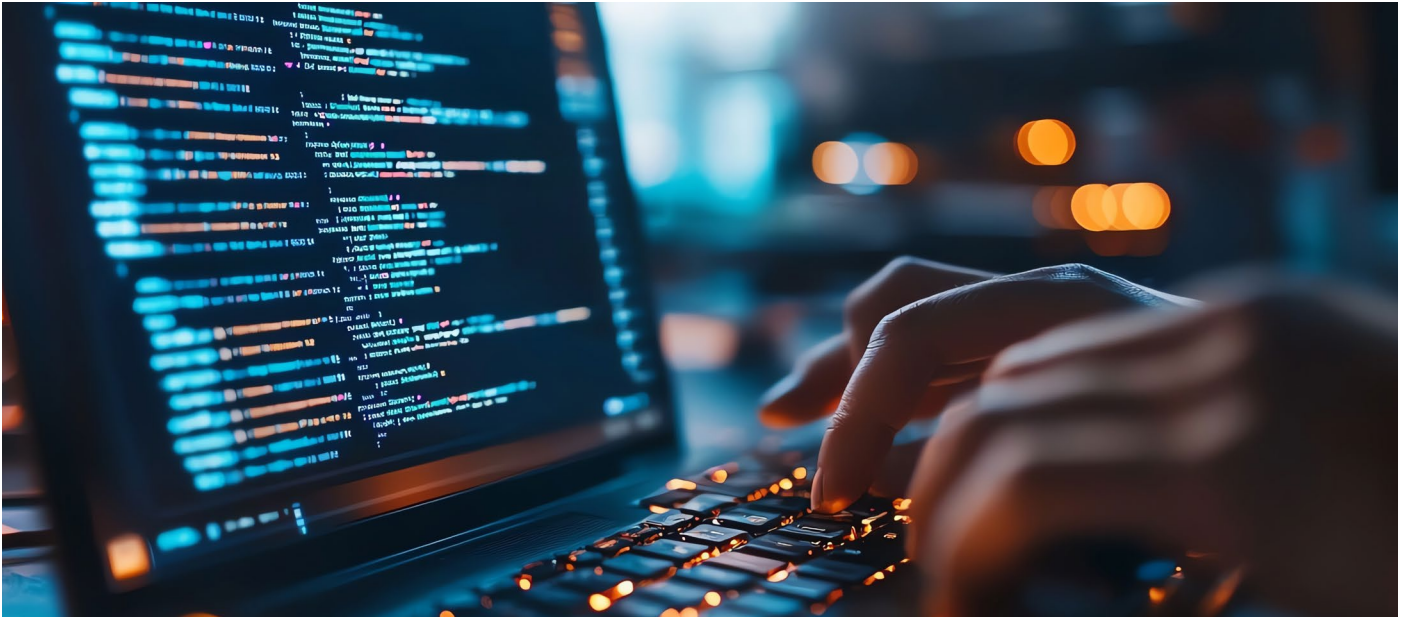


OpenText Application Security Posture Management (ASPM)

Aggregate data from SAST, DAST, Pen Testing, and more, enabling AppSec professionals to make meaningful improvements in their security posture



Capabilities

- Configurable user experience**
 Focus on what's most important, while enjoying the benefits of modern advanced filtering, API access, and more.
- Historical trend insights**
 Take advantage of key insights into scans and vulnerability trends.
- Scalable AppSec management**
 Provide access to a vast amount of AppSec users, while keeping optimal performance with rapid response time.
- Data access**
 View your data any way you want with features such as powerful query language, data normalization, and API access.

Enterprises must aggregate vulnerability findings from different testing tools and methodologies (SAST, DAST, OSS, and Pen Testing, to name a few). Then they must normalize those vulnerabilities into a “single pane of glass.” (And ideally, add business level insights on top of that.) However, most companies struggle to aggregate and analyze the data into meaningful and actionable insights. Siloed security testing results in a myopic view of enterprise-wide threats, resulting in the inability to wholistically prioritize vulnerabilities.

OpenText™ Application Security Posture Management (ASPM) aggregates and correlates application security data with software asset inventories to help manage software risk across multiple vectors: SAST, DAST, SCA, container-based security, and penetration test results.

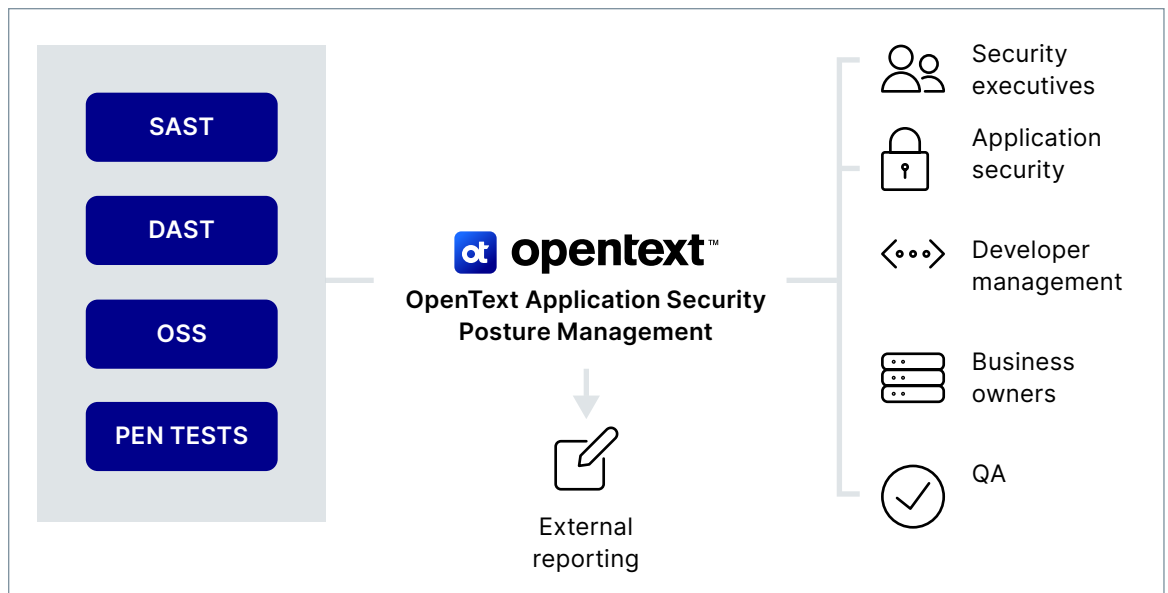
Advanced AppSec reporting allows cyber executives, VPs of development, cyber risk managers, developers and AppSec teams to prioritize what's most important in their application security posture.

OpenText ASPM drastically reduces time spent, effort, and financial burden by having a single pane of glass to integrate into target sources to see results and recommendations to streamline the process.

Clearly identify and communicate enterprise-wide application security risk

OpenText ASPM helps enterprises truly manage their AppSec programs by:

- Clearly identifying application security risk and providing health, risk, and compliance visibility across the entire enterprise in a way no other solution can match.
- Reducing enterprise risk throughout the application development lifecycle.
- Highlighting trends across applications and prioritizing the most threatening vulnerabilities.
- Reducing time spent compiling reports with centralized management and automated aggregation across multiple tests, testers, and tools.
- Delivering information in standardized reporting that eliminates formatting and tool conflicts with automated data normalization.
- Contextualizing application security data with business context to enrich the data to streamline the process.
- Eliminating the cost, risk, and manual resources associated with traditional tool and application data comparison.
- Extending the value of current security investments by providing a common database.



Make data-driven decisions

OpenText ASPM provides a clear picture of application risk across the entire enterprise and lets every team from the board room to engineering make data-driven decisions based on clear and precise information.

OpenText ASPM provides the visibility into enterprise-wide application security risks that enables accurate decision making with:

- Instant snapshot views of your current enterprise-wide application security posture.
- Clear identification of issues, risks, and remediation.

- Data consistency, e.g., ensuring that “critical” and other vulnerability categories are defined the same way across tools and testers.
- Trend reporting that shows how your application security risk is changing over time.
- Increased data visibility.
- Improved efficiency and productivity.
- Ongoing assessment and compliance validation.
- Data enrichment with application of business context and insight with vulnerability information.

Manage results instead of reports

Pen testers and AppSec teams spend too much time creating reports that must resolve conflicting data formats and combine results from different testers, tests, and tools.

More importantly, reporting problems make it that much harder to communicate a true picture of risk to every stakeholder who needs to understand it. That includes every audience, from the executives responsible for risk and branding to the developers who build the applications.

Focus on results, not formatting:

- Simplify report management, creation, and delivery.
- See trends to prove compliance with results and show how applications are tested.
- Ensure compliance with application testing being done with the right technology at the right time in the right order.

Key features of OpenText ASPM

- Provides true observability across your entire enterprise application risk with pinpoint clarity and understanding.
- Gives full insight into enterprise-wide vulnerabilities with high-level trending and executive dashboards that immediately convey the current state of risk across the entire enterprise.
- Simplifies report creation and communication by standardizing and normalizing data formats across incompatible tools and applications.
- Extends the value of your current application security investments by reconciling their incompatibilities and presenting a single pane of view for your entire AppSec program.
- Enriches vulnerability data by adding business context and value.