

PRODUCT OVERVIEW

# OpenText™ Trading Grid™ Messaging Service

Connect once, reach anything with the world's largest EDI VAN



**Simplify information exchange complexity** with a single, unified platform



**Quickly onboard new business partners** with a global directory



**Gain end-to-end business insights** with advanced visibility tools



**Support digital transformation initiatives** with a digital backbone

**The explosion of communications has dramatically increased process complexity and supply chain response time, requiring greater sophistication from EDI VANs. Secure and reliable any-to-any integration, end-to-end visibility and exception management and ongoing investments to the integration platform are critical to success.**

OpenText™ Trading Grid™ Messaging Service is the largest and most mature value added network (VAN) enabling electronic data interchange (EDI) between businesses. Companies can connect to a single unified integration platform to securely and reliably exchange nearly any type of business document, in any data format, with trading partners around the world. Leveraging the OpenText™ Trading Grid™ platform, businesses gain access to a complete solution for reliable connectivity, secure collaboration, realtime business intelligence and additional advanced technologies to streamline processes and ensure a successful digital future.

## **Simplified information exchange**

As the leading cloud integration provider, OpenText enables true business-to-anything integration capability using a single platform, OpenText Trading Grid. The Trading Grid platform leverages a network of 1.1 million companies and hundreds of connected applications that can replace the complexity of using multiple, and sometimes redundant, connectivity and integration tools.

## **Secure ecosystem**

The Trading Grid platform provides integrity at every level, including user authentication, non-repudiation, physical security, data encryption and ongoing security audits.

OpenText™ Trading Grid™ Messaging Service builds on decades of EDI VAN expertise in connecting to external trading partners and modern data integration technologies using a single cloud platform.

***"We have seen an EDI growth of 61% in the past three years and OpenText Trading Grid Messaging Service has enabled us to easily scale to meet this growing demand"***

Russell Spikes  
EDI & Central Data Support Analyst  
Currys, formerly Dixons Carphone

[Read the Success Story](#)

OpenText operates world-class data centers in the United States and Europe to ensure business continuity and fast, reliable, mission-critical business transactions. With the Trading Grid platform, companies can achieve an accurate view of transactions exchanged and efficient management by exception.

## Central user portal for all applications

OpenText™ Trading Grid™ Online is a configurable single-sign-on (SSO) portal that allows access to all Trading Grid applications from a central location. Rules-based services enable companies to automate steps in their electronic exchange for even faster trading processes.

## Quick partner onboarding

With Global Partner Directory, included within the Trading Grid platform, companies can remove onboarding bottlenecks by accessing a pre-connected community of trading partners. Enriched with additional company information, such as business performance and ethical and sustainability metrics, companies quickly find and onboard customers and suppliers who align with their own ethical business standards.

## Visibility, alerting and analytics

OpenText™ Lens provides an accurate view into all transactions on the Trading Grid platform. Achieving operational excellence is possible by setting up alerts and notifications on key business-critical events.

## Full suite of software and services

Trading Grid Messaging Service offers a comprehensive suite of Software-as-a-Service (SaaS) solutions.

- **OpenText™ Active Invoices with Compliance:** Provides capabilities for automating invoicing and compliance in more than 45 countries and offers data validation, digital signatures, archiving and electronic invoice delivery.
- **OpenText™ Active Intelligence:** Allows companies to monitor the contents of B2B transactions in real time to ensure accuracy and compliance with their business rules.
- **OpenText™ Active Catalogue:** Enables suppliers to send their catalogue data, including more than 600 product attributes, to support a company's B2C eCommerce storefront.
- **OpenText™ Active Community:** Allows companies to keep all information about their suppliers and customers up to date and use it to roll out new programs or business processes.
- **OpenText™ Cloud Based Translation:** streamlines data-mapping and translation tasks, leveraging a large canonical library of prebuilt maps for trading with companies around the globe in various standards.
- **Direct connect outsourcing:** Enables companies to outsource complex and time-consuming direct connections via common protocols to OpenText. Options include AS2, OFTP, SFTP and FTPS outsourcing.

## Trading Grid Messaging Service features

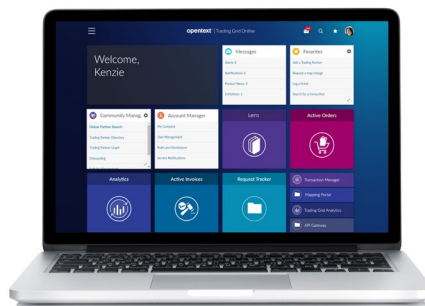
<b>Global support</b>	<ul style="list-style-type: none"><li>• Delivers global customer support around the clock and around the world</li></ul>
<b>High availability, disaster recovery</b>	<ul style="list-style-type: none"><li>• Provides high availability guarantees with world-class data centers in the U.S. and Europe to provide local services with global reach and redundancy within and across data centers</li></ul>
<b>Data formats, standards and protocols</b>	<ul style="list-style-type: none"><li>• Supports a broad range of industry and vertical standards, including AS2, AS4, OFTP2, SOAP, FTP, FTP/s, SAP/ALE, MQ Series, HTTP/s, RNIF and many more, boosting the agility and efficiency of B2B operations by connecting business partners in their preferred communication formats</li></ul>
<b>Visibility, alerting and analytics</b>	<ul style="list-style-type: none"><li>• Provides a transaction lifecycle management application, OpenText Lens, to monitor data flows between any system or data source, within the enterprise and with external business partners.</li><li>• Enables companies to easily access, drill down and analyze the rich data being exchanged across the Trading Grid platform</li><li>• Sends transaction status alerts and allows companies to monitor in-flight transactions to ensure data quality and compliance</li></ul>
<b>Quick partner onboarding</b>	<ul style="list-style-type: none"><li>• Offers a single repository, Global Partner Directory, of all trading partners connected to the Trading Grid platform</li><li>• Includes extensive search capabilities and self-service connection invitations to accelerate trading partner onboarding and time to value</li><li>• Enables ethical sourcing strategies where businesses may need to select trading partners based on specific ethical or corporate social responsibility criteria</li></ul>

 [Watch the video](#)

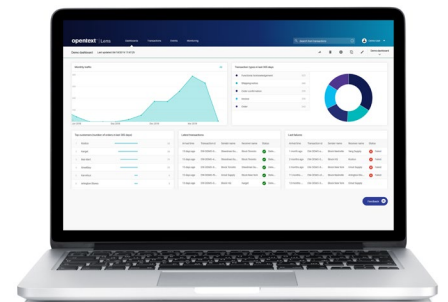
 [Customer stories](#)

 [Join the conversation](#)

 [Learn more](#)



Trading Grid Online is the single sign-on portal for accessing all Trading Grid applications



OpenText Lens provides both live status and historical trends of all integration flows on the Trading Grid platform