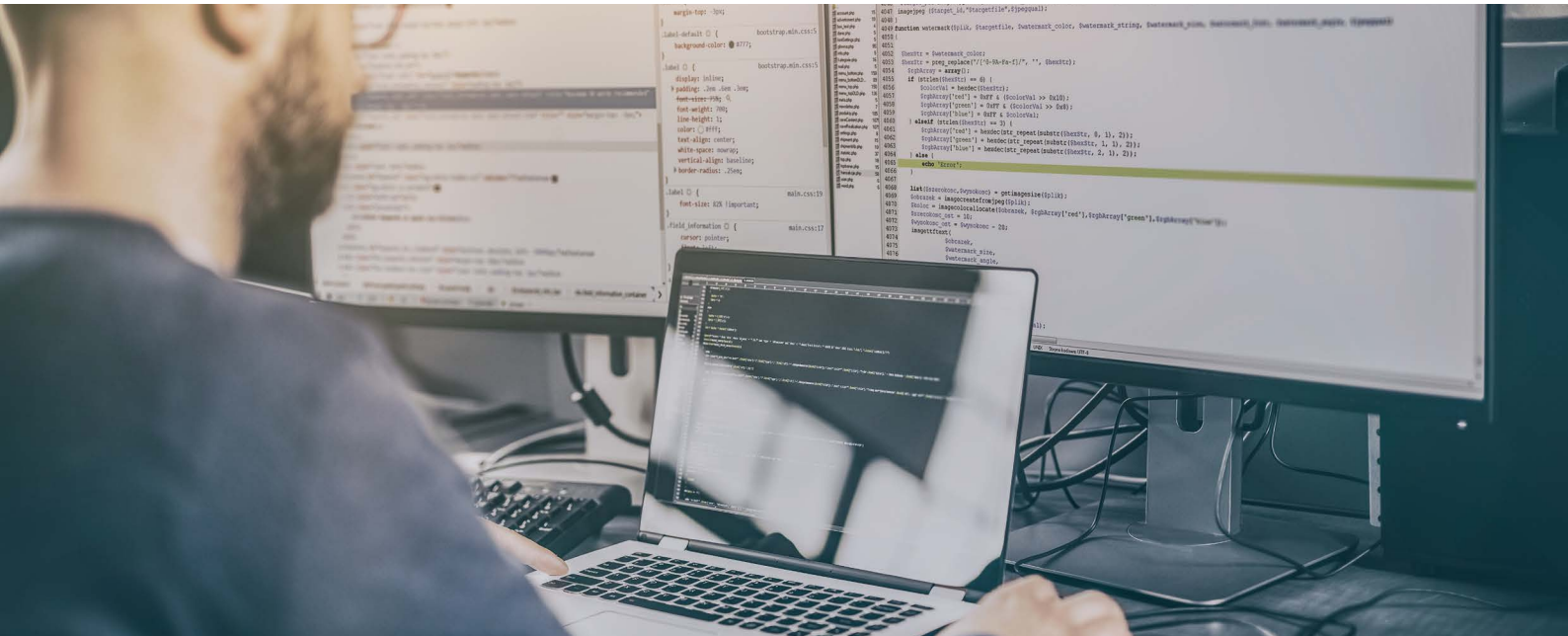


PRODUCT OVERVIEW

# OpenText Gupta TD Mobile 2.2

One team, one IDE, one source—all mobile devices



**Improves** developer productivity through integrated source control



**Provides** better team collaboration via cloud source control



**Increases** productivity for client-side development



**Allows** users to write less code, develop faster and build native applications for every device

**Collaboration and source control are key requirements for successful software development in teams. Team members need quick access to central source code repositories and version management. Improved development team productivity means software is available faster and at a lower cost.**

OpenText™ Gupta TD Mobile 2.2 integrated source control enables developers to quickly access team source code repositories and collaborate with other development team members without leaving the integrated development environment (IDE).

High value software development is at the core of Gupta TD Mobile. Accessing a remote database requires no coding at all. Other back-end tasks, such as calling REST Services and sending email, can be implemented using the built-in Rapid Application Development language. Client-side development is highly-efficient and focuses on setting properties and choosing from pre-defined options.

Improved developer productivity is the key feature of Gupta TD Mobile, resulting in higher value for organizations developing mobile business applications.

For organizations building cross-platform mobile enterprise applications, Gupta TD Mobile simplifies, automates and accelerates mobile enterprise application development—while greatly reducing costs.

Today's teams need a simple way to collaborate beyond the boundaries of a local area network and, in some cases, through a cloud repository. Source control is at the heart of software development, enabling powerful file and version management and increased collaboration.

## Consulting Services

Get expert knowledge for your mobile software development projects.

## Learning Services

Online learning services are available for OpenText Gupta TD Mobile.

With Gupta TD Mobile 2.2, developers have integrated access to popular source control systems. With just a click, files can be opened from a source branch into the IDE. Changes can be committed to the repository and updates from others can be downloaded and merged. Gupta TD Mobile 2.2 includes a diff and merge tool that visually displays changes between file versions and provides easy merge options.

Gupta TD Mobile 2.2 provides much accelerated client-side productivity through several means of code reusability. Global JavaScript functions avoid matching code per page, which can become difficult to maintain. Instead, developers can create one instance of a JavaScript function and use it on all pages of the app.

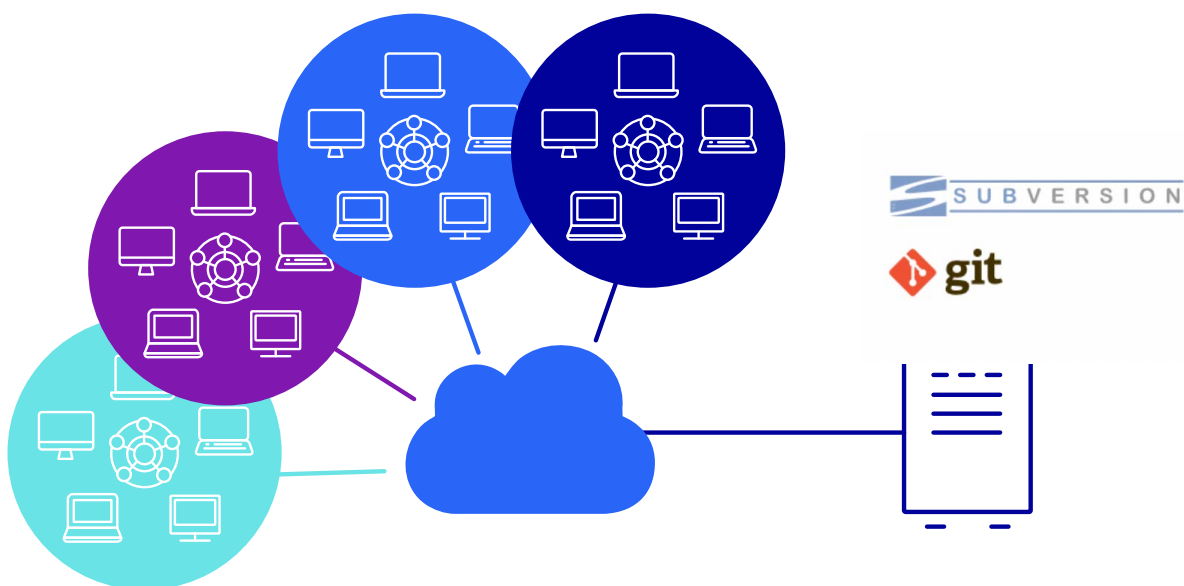
User events are another mechanism of code reusability for Gupta TD Mobile apps. User events are client code sections that can be executed by raising the user event from client-side code. For example, the developer can create multiple user event sections on the page level and have multiple places where code at the control level raises the event.

Gupta TD Mobile accelerates mobile business app development by enabling users to:

- Quickly design the user interface using the intuitive visual designer
- Define data sources and create no-code access functions for a myriad of data access options
- Easily link backend data to visual screen object

Building mobile business applications has never been easier or faster.

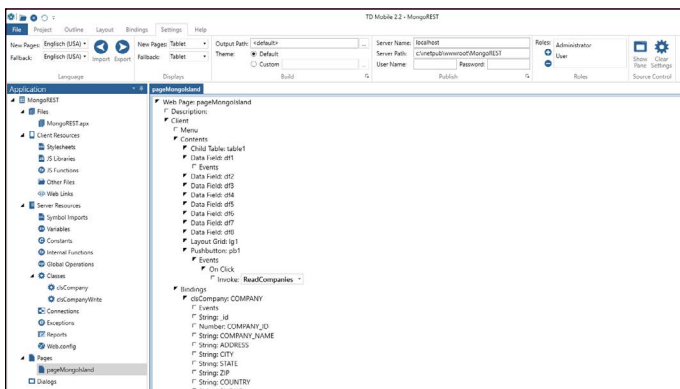
With Gupta TD Mobile, developers can create native-hybrid mobile apps for multiple platforms, usually Android™ and iOS, from one single line of source code. Compared to native development for Android and iOS, there is no need for dedicated specialists for all mobile platforms. One team can cover all important mobile platforms. As a result, Gupta TD Mobile provides huge savings for mobile business app development. With the HTML5/JavaScript client technology of Gupta TD Mobile, apps can be deployed as browser-based web applications, giving application development a much broader user reach.



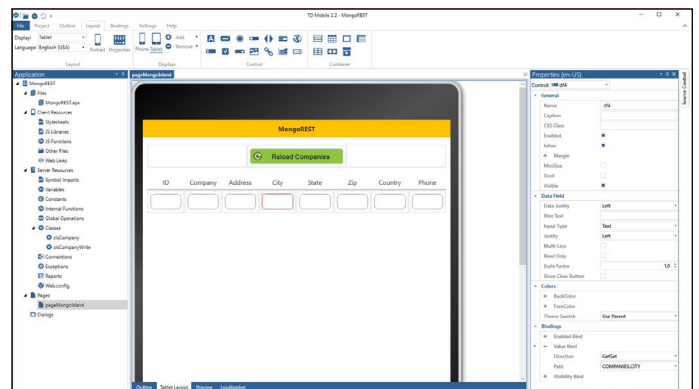
Developer teams around the globe can collaborate using SubVersion or Git source control.

Feature	Description
<b>Single source code for all mobile devices</b>	Build a single application once that can run on all mobile devices—including smartphones, phablets and tablets. Use one team of developers instead of relying on a development team for each device OS. Deploy native iOS®, Android®, Microsoft® Windows Phone® and BlackBerry® applications, or deploy mobile web apps to the cloud.
<b>Automatic database access</b>	Data connections pull data from a back-end data source, such as a relational database or a NoSQL database, e.g., MongoDB. In Gupta TD Mobile, data connections are defined graphically so the developer does not need to write code or learn the query syntax of the database they want to use. The data connection requires a few easy steps to use Gupta TD Mobile.
<b>Easily bind screen objects to data sources</b>	Bindings are used to tie data to the GUI components in a mobile enterprise app. Once the data models are defined, developers can easily tie fields on those models to fields in the UI without writing code. Gupta TD Mobile automatically generates the service interfaces and client-side logic to glue everything together.
<b>Visual page design</b>	Gupta TD Mobile makes app page design a snap. Simply drag the objects you want on your page from the ribbon bar. Choose from a variety of predefined themes or design your own. Define the details of your screen objects using the property pane. Choose from sortable tables, list view, map control, chart control and more. Several container controls simplify formatting.
<b>Use device features like GPS and camera</b>	Leverage device features such as the current GPS position, taking a photo or video, sending and receiving notifications, accelerometer, phone links, SMS links, email links and map links. For example, just a tap will show the current GPS position on a map or send a text message. Read barcodes and capture signatures for further processing.
<b>Event Actions</b>	Gupta TD Mobile uses Event Actions, which automate high-level commands commonly required on the client side so the developer does not have to write JavaScript code. This includes navigating to a page, If, Else, Timer, invoking back-end operations and much more.
<b>Publish native or mobile web apps</b>	Build native iOS, Android, Windows Phone and BlackBerry apps from the same source code. Native apps can leverage more device functionality, such as using the camera to decode barcodes, search the device contacts application and more. Publish your native apps directly to vendor app stores or from a private or public cloud.
<b>Offline mode apps</b>	If you need to use your apps frequently in areas without network reception, you can leverage the multi-page offline mode. Build apps and navigation between pages even when the device is offline. Data changes can be stored to the local browser database and synced with the backend when network connectivity has been restored.
<b>Location-based queries</b>	Run database queries, such as “Return all restaurants that are closer than one mile away.” Then display a list or show the restaurants in a Gupta TD Mobile map control.
<b>Stunning reports for mobile business apps</b>	The new Report Designer allows you to design HTML or PDF reports, including powerful reporting features such as formulas, multiple break groups and easy formatting. Create invoice reports, business reports or any other report you can imagine. At runtime, the report data is passed to the reporting engine and the ready report is opened on the client-side. The report can also be emailed to customers.
<b>Source control</b>	Integrates with SubVersion, Git and Team Foundation Server (via Git interface TFS 2013 and above)

Feature	Description
Global JavaScript functions	Allows users to code JavaScript functions and call them from any page of the app
User-defined events	Enables users to code reusable code sections that can be triggered from any code section of the page
If Elself Expressions	Developers can provide more complex If and Elself expressions in JavaScript format to test for complex conditions.
Limit/Skip Data Operations	Allows users to define the data window of the query result set and use database features to quickly retrieve the requested data. Data Operations have two new bindings to set the size of the data window and the number of rows to skip. The new Limit binding defines the size of the data window in rows and the Skip binding tells the Data Operation at what position to start reading data.



Global JavaScript functions reduce the amount of JavaScript code that needs to be maintained on page level.



Interactively design functional and attractive user interfaces for your mobile business apps.

[See the demo](#)

[Download the trial](#)

## About OpenText

OpenText, The Information Company, enables organizations to gain insight through market leading information management solutions, on-premises or in the cloud. For more information about OpenText (NASDAQ: OTEX, TSX: OTEX) visit: [opentext.com](https://www.opentext.com).

## Connect with us:

- [OpenText CEO Mark Barrenechea's blog](#)
- [Twitter](#) | [LinkedIn](#)