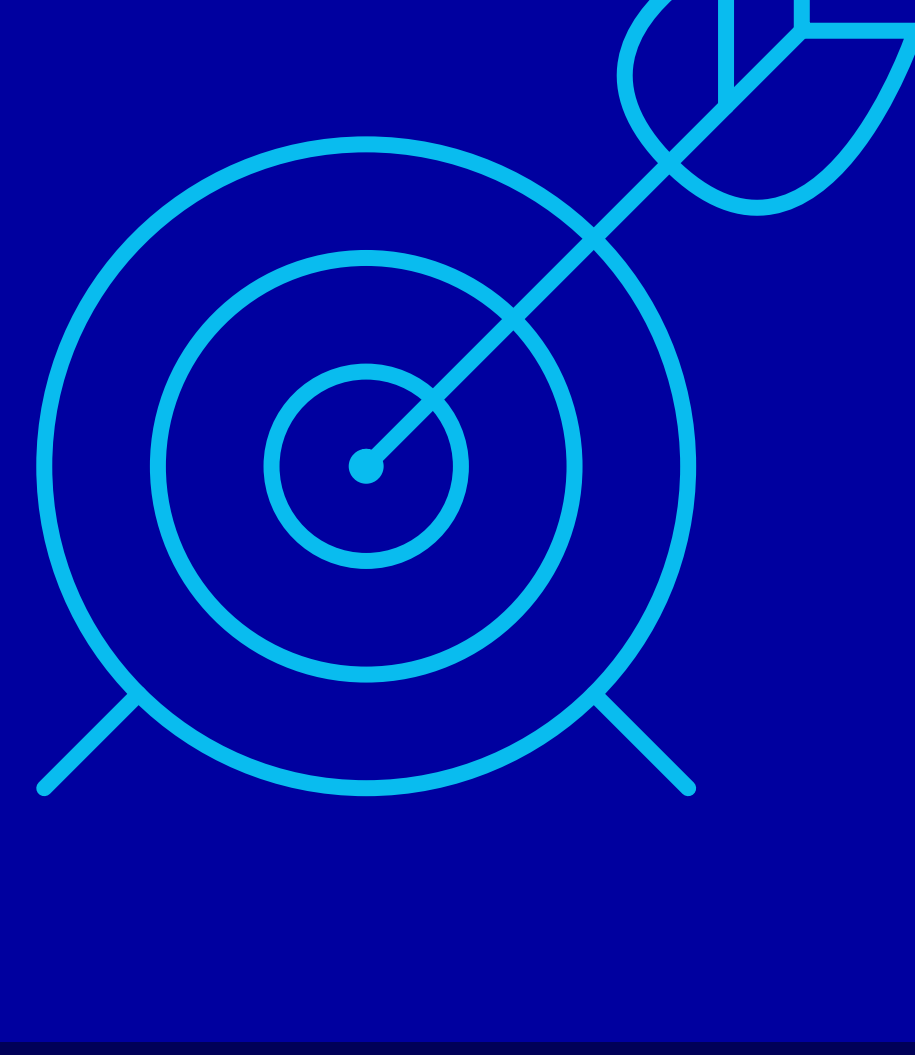


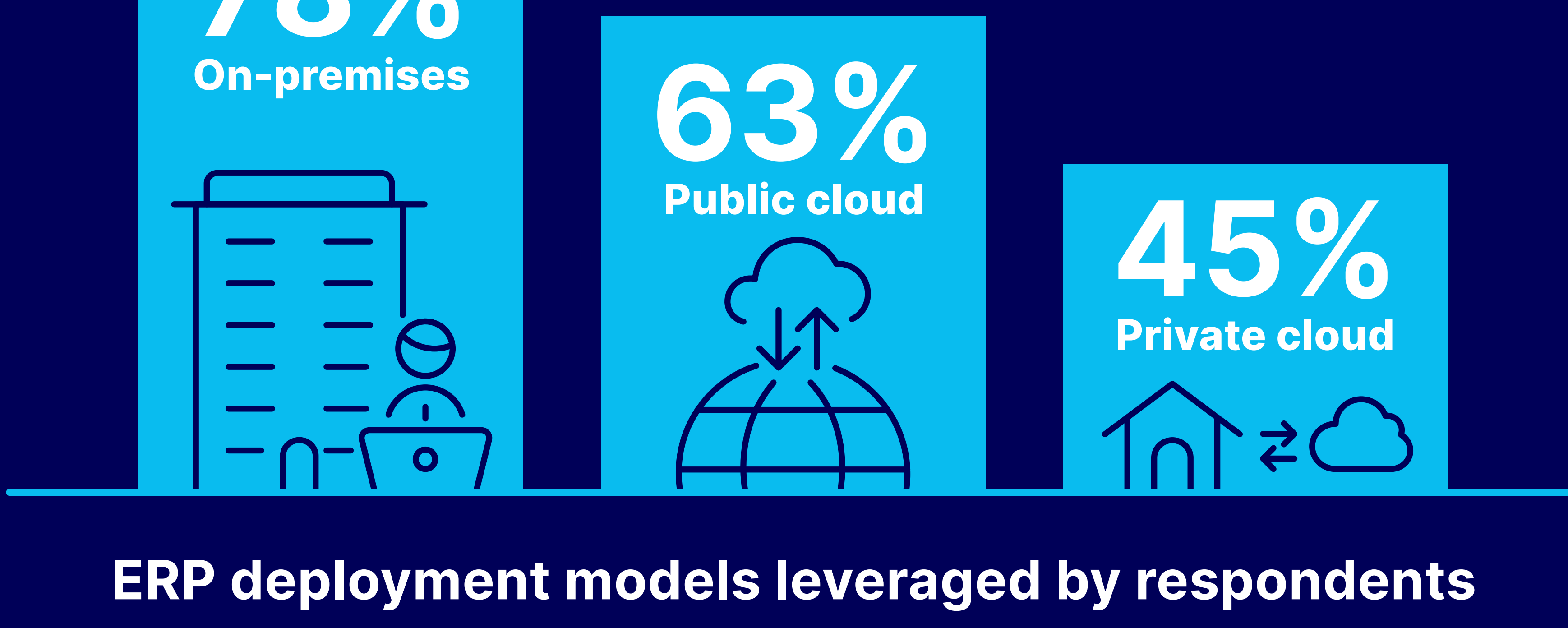
# Stop struggling with ERP integration



As organizations modernize their ERPs they expose major gaps in their existing integration capabilities. OpenText and IDG surveyed organizations to find out more about today's ERP landscape.

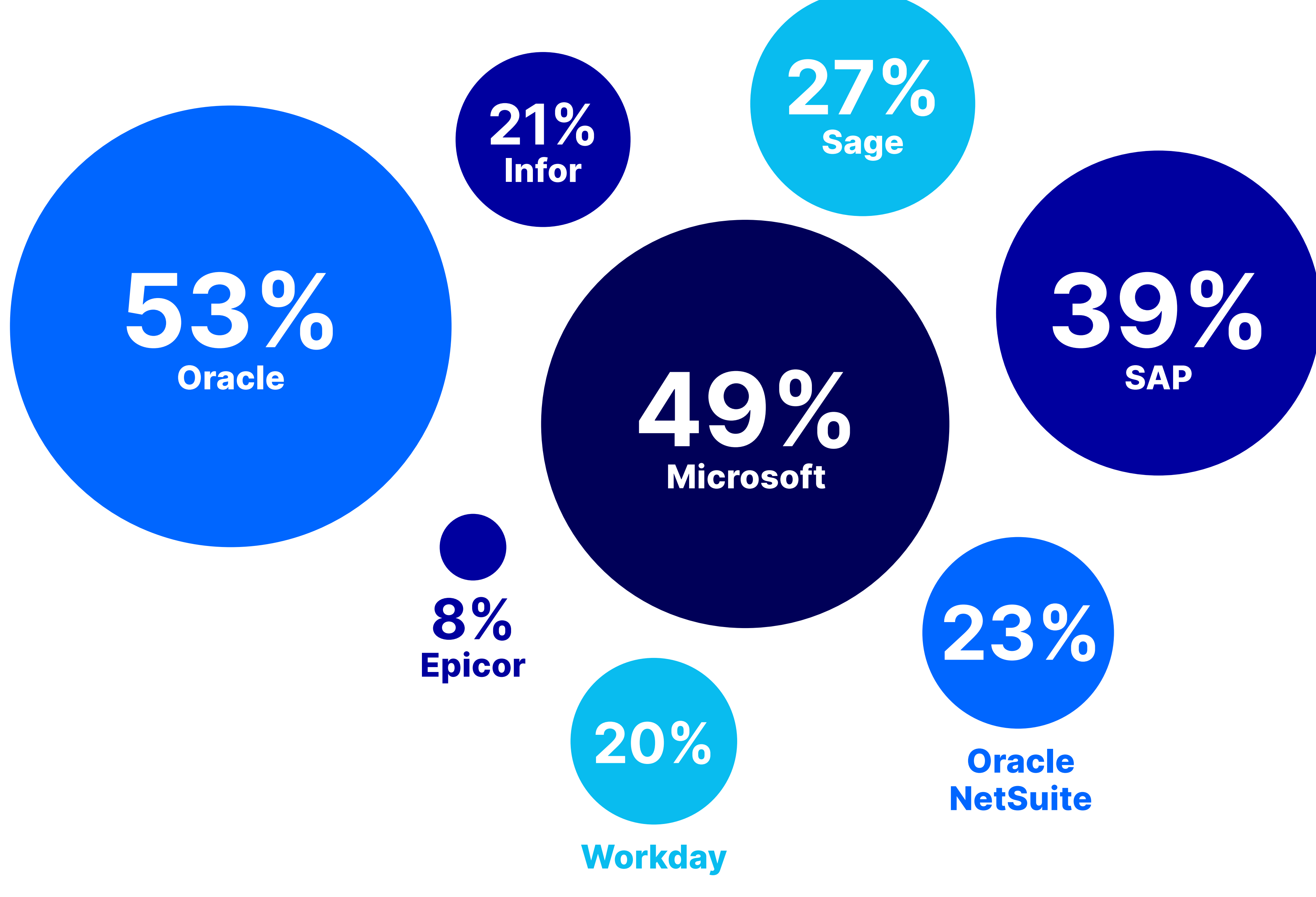
## The ERP landscape in organizations is complex

Many organizations leverage multiple cloud and non-cloud ERP deployments, adding ERP support and management complexity.



ERP deployment models leveraged by respondents

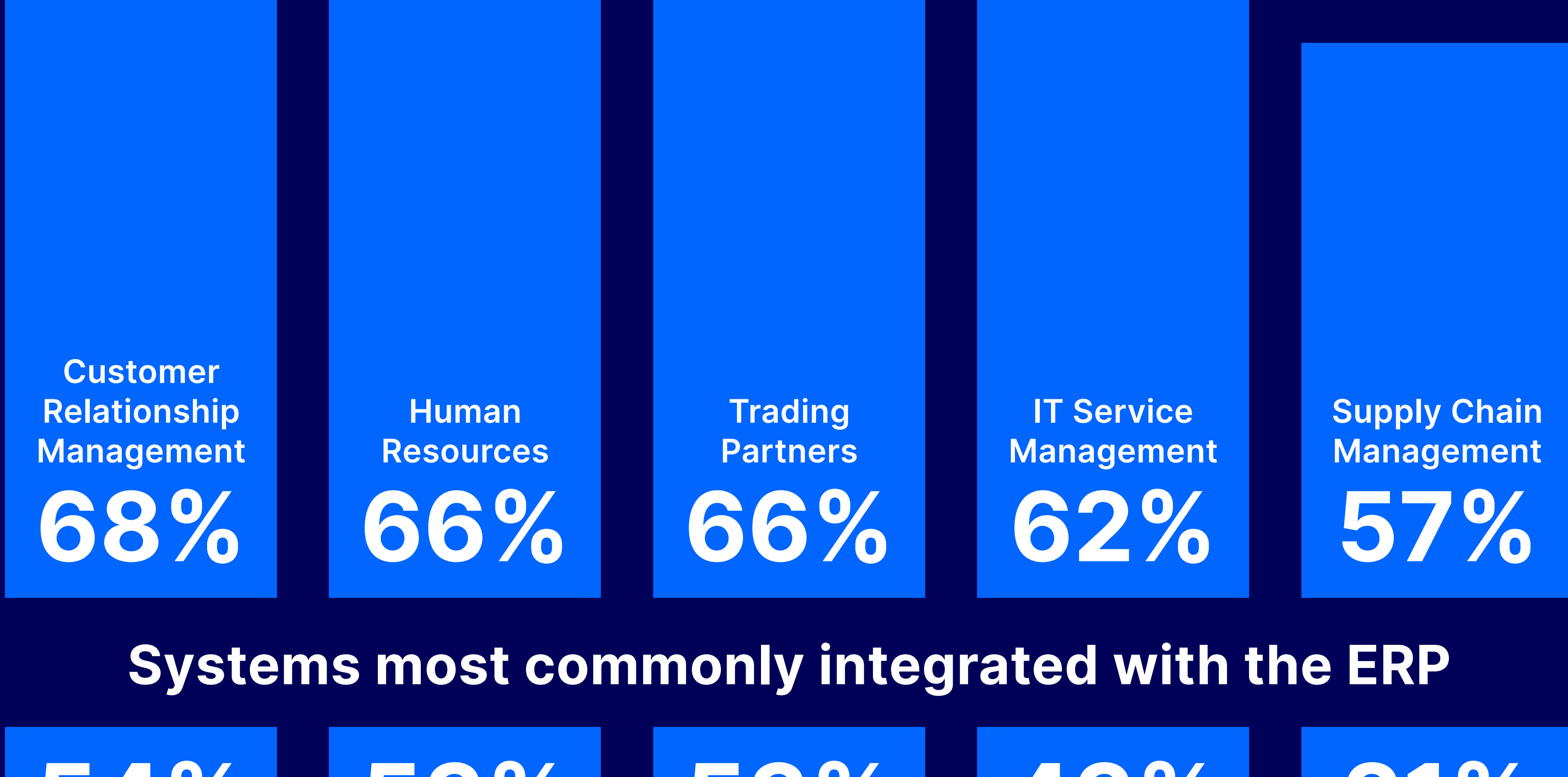
## ERP systems used by respondents



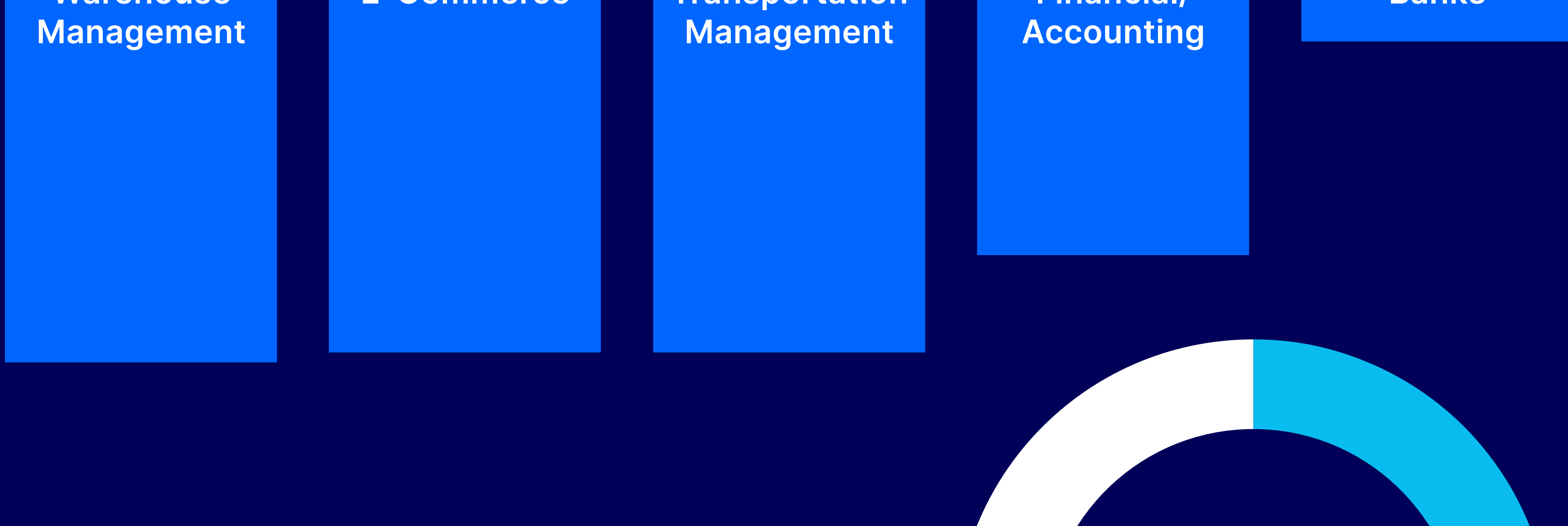
## Diversity in ERP integration

ERP is critical for supporting modern business processes, but it often needs to be integrated with other business systems.

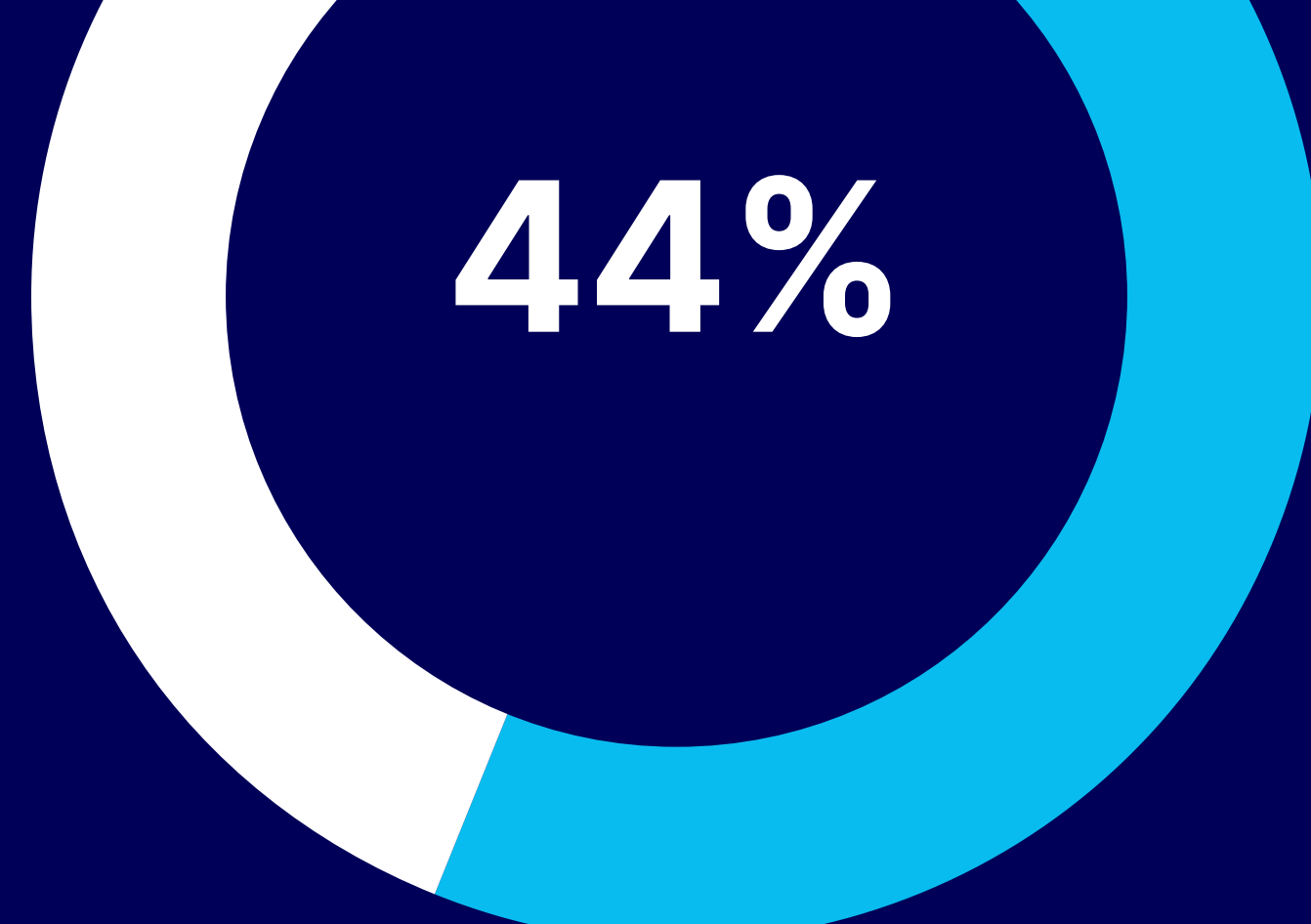
**79% of organizations consider integration a critical priority**



Systems most commonly integrated with the ERP



On average, 44% of ERP transactional data comes from outside the organization

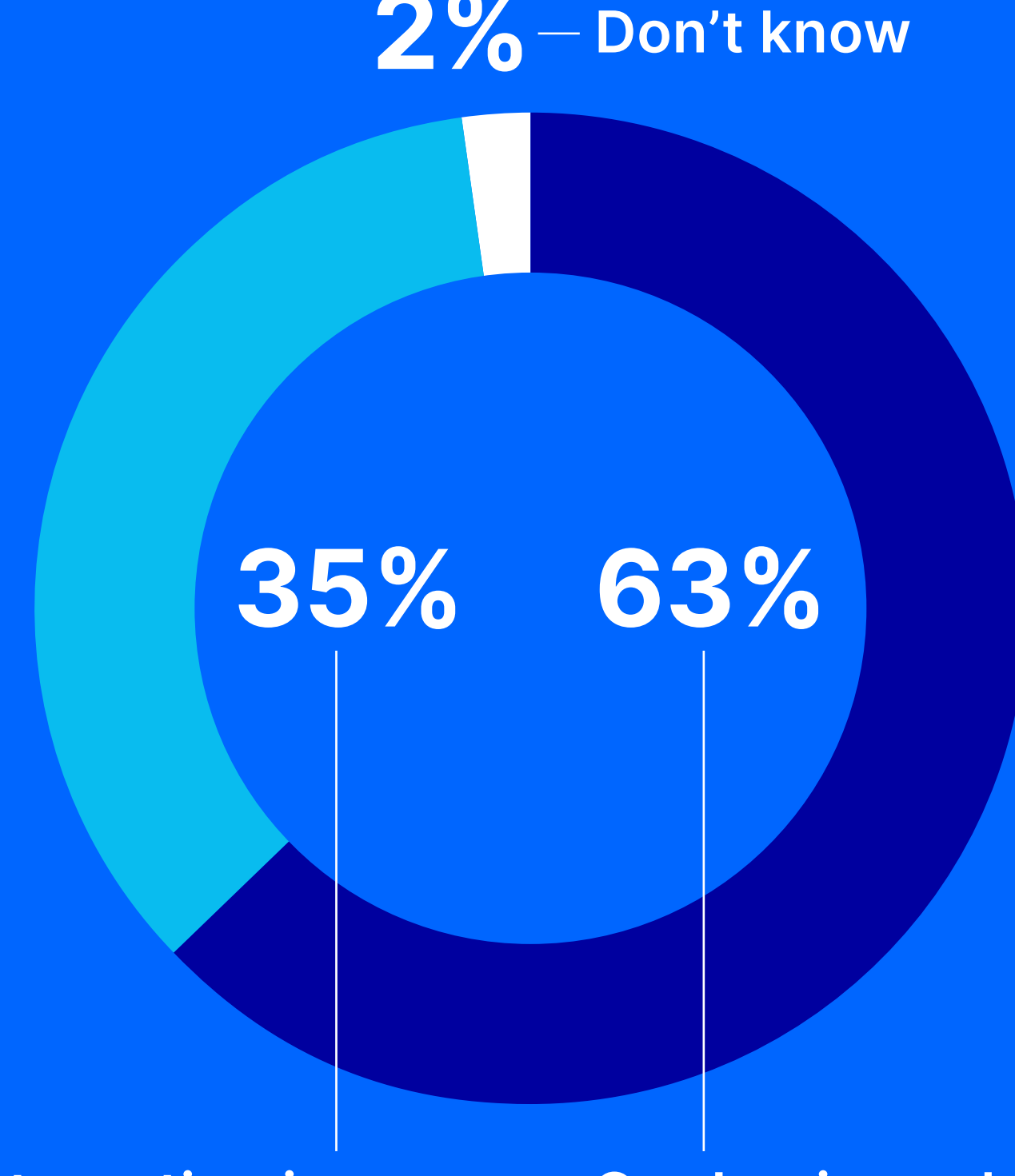


## The result? ERP integration is a major challenge

Organizations report challenges in both integration project delivery as well as managing and maintaining their existing integrations.



**86%** of organizations have experienced delays in rolling out ERP integration projects



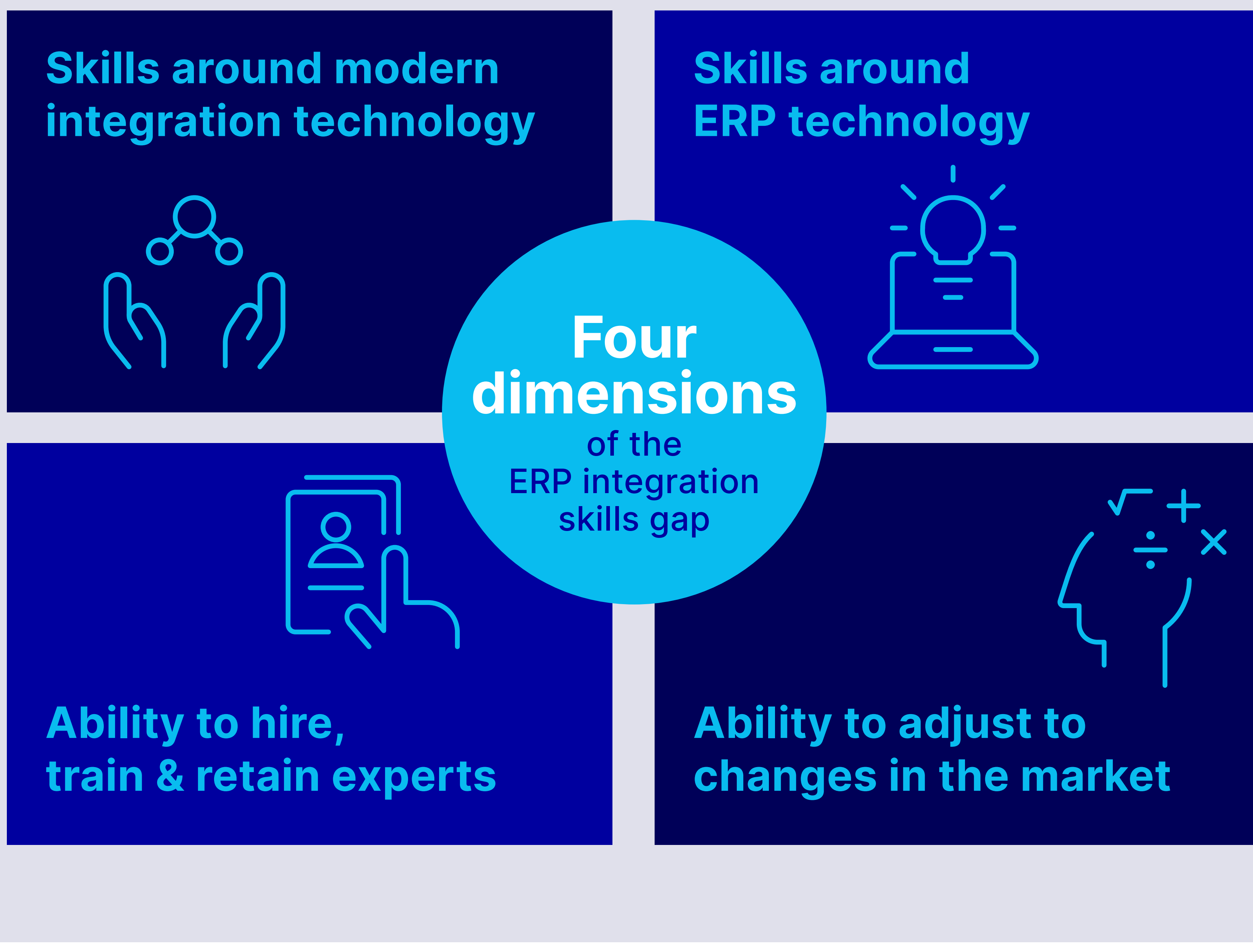
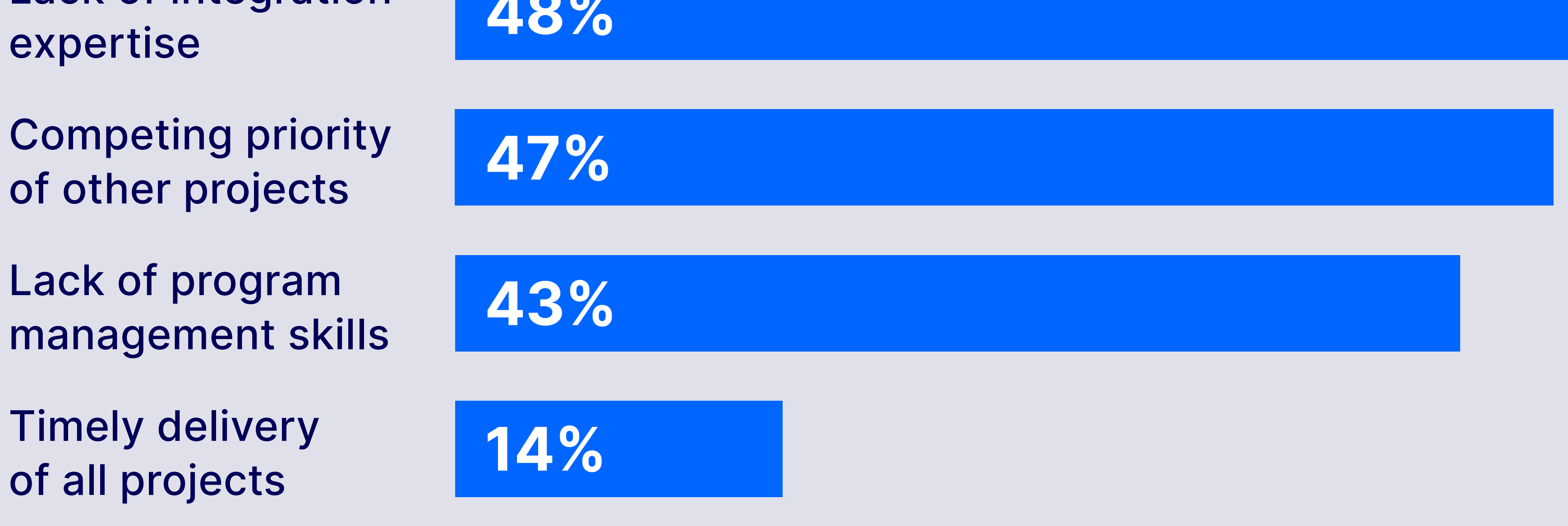
Integration issues have never impacted ERP connectivity at our organization

Our business has experienced a loss of ERP connectivity due to integration issues

## Expertise is key to success

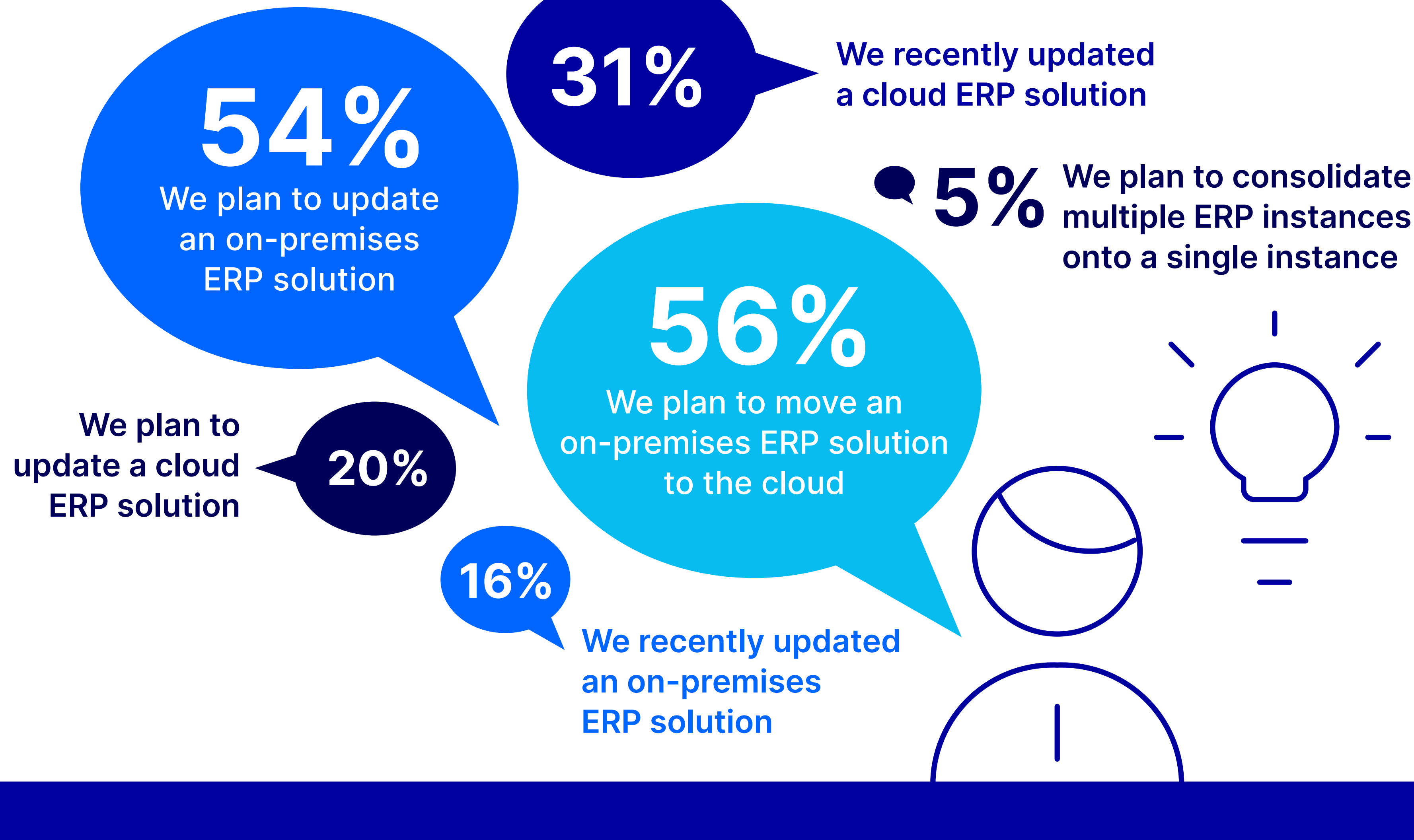
The biggest challenge that organizations have is lack of expertise, closely followed by competing priorities. The skills gap ranges from expertise in the latest integration technologies to ERP system expertise and organizational capabilities.

### Leading causes of ERP integration delays



## ...as is defining projects based on clear goals

Based on ERP modernization plans reported by organizations, diversity – and complexity – of the ERP landscape is likely to persist into the near future



Take a closer look in the ERP modernization white paper

[Get the report](#)

opentext™