

**opentext™**

eBOOK

# **Accelerate product development 2021**

Key capabilities to begin review sooner and complete review faster



## Content

This eBook details Axcelerate product initiatives released in 2021 to reduce the effort and cost of eDiscovery by reducing the volume of review work and making the required work easier.

<b>Key developments prior to 2021</b>	<b>3</b>
<b>2021 advancements</b>	<b>4</b>
Collection	5
Ingestion	6
Processing	7
Review process management	8
Visual analytics	9
Enhanced RegEx	10
<b>More inclusive review</b>	
Excel	11
Chat	12

## Key enhancements prior to 2021

Feature	Description
New UI (20.2)	Improved navigation
Axcelerate Visualizer (20.4)	Visual display for big picture insights Choose what to display and detail of each
Connectors and parsers (20.4)	Gmail and Google drive connectors added to the 40+ connectors already available – Generic chat parser and Teams parser
Enhanced text analytics (20.2)	Entity identification, sentiment analysis, fact vs. opinion analysis, doc summaries
Predictive Search (20.2)	Use known relevant data to find similar “Predictive coding on the fly”
Chat MIME type support (20.4)	Key foundation for broad support of chat data beyond Bloomberg
Review progress, reviewer productivity reports	New reports introduced to track project progress and identify bottlenecks with individual reviewers

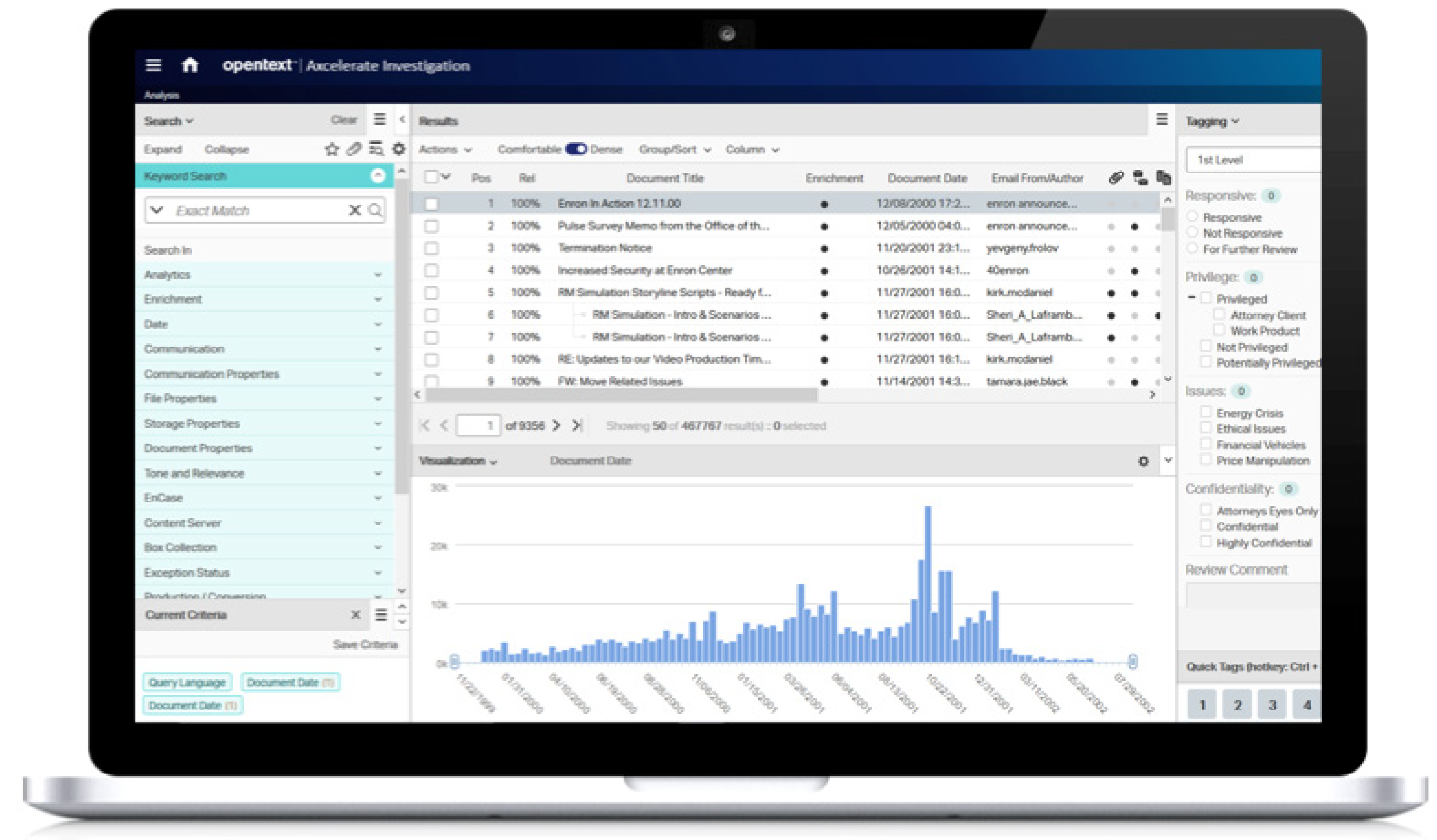


## Axcelerate Investigation – 20.4

- Purpose-built variant of Axcelerate for ECA and investigations
- Front-loaded analytics to find facts fast
- Includes Predictive Search and all data analytics
- Does not include technology-assisted review or production utilities
- Easy upload to Axcelerate Review and Analysis for matters that proceed to review and production

[Read the Product Overview](#)

[Watch the Explainer Video](#)



## 2021 Enhancements – Collection

Significant expansion in connectors to:

- Abstract IT and put legal teams in control of data collection
- Collect expansively but precisely to constrain the volume of data for eyes-on review
- Connectors and parsers added in 2021
- WebDAV / Druva (21.2)
- Google Calendar (21.2)
- Google Cloud Storage (21.2)
- AWS S3 (21.2)
- Documentum (21.2)
- Teams connector (21.2)
- Slack parser (21.4)
- Cellebrite parser for mobile device data (21.3)

**View the full list of connectors**  
**MySupport login credentials required**

**Watch the explainer video**

### 2021 collection enhancements

---

New ingestion filters (21.3)

---

Incremental crawl (21.3)

---

## 2021 Enhancements – Ingestion

Ingestion enhancements to:

- Improve visibility over ingestion processes
- Streamline data ingestion
- Target data more precisely

**View the users guide (pg. 22)**  
**MySupport login credentials required**

2021 enhancements	Description
Decrypt Microsoft RMS (21.2)	Increased inclusivity of Azure data
Ingestion as jobs* (21.3)	Better management of process
Ingestion status report* (21.3)	Start, stop, pause, view ingestion jobs – status change email alerts
Metadata analysis report (21.4)	Better visibility into data composition - includes document date filter

\* Private Cloud and OnDemand only

## 2021 Enhancements – Processing

Processing enhancements to:

- Improve visibility over ingestion processes
- Streamline data ingestion
- Target data more precisely

2021 enhancements	Description
Search as jobs (21.2)	Avoid downtime and system lags by running large searches as jobs in the background – pause, resume or cancel search jobs as needed
Sort data by word count (21.2)	Find and exclude image-centric documents with no text to assess

**View the users guide chapter 4**  
**MySupport login credentials required**

**Watch the Axcelerate search modes video**

## 2021 Enhancements Review process management

Review process management enhancements to:

- Improve visibility over review progress and reviewer productivity to address bottlenecks early
- Streamline review by managing data more effectively
- Align review batches to the criteria of matters

**View the users guide (pg 243 to 261)  
MySupport login credentials required**

**Watch the review progress and reviewer productivity report video**

2021 enhancements	Description
Review in context and review batch grouping (21.2)	Context mode corrals all associated docs, threads, families and duplicates to increase focus for individual reviewers across a topic <ul style="list-style-type: none"><li>• “Apply same tags” to bulk code clusters of data with same coding</li><li>• Assign colors to fields and values so related data is easier to spot</li></ul>
Review progress and reviewer productivity reporting (21.2)	Complete review sooner through better resource management and addressing bottlenecks with individual reviewers early
Overturn reporting (21.4)	Expedite review by catching coding inconsistencies early on to avoid significant rework later



## 2021 Enhancements – Analytics

Axcelerate Visualizer Heat Maps visual analytics to:

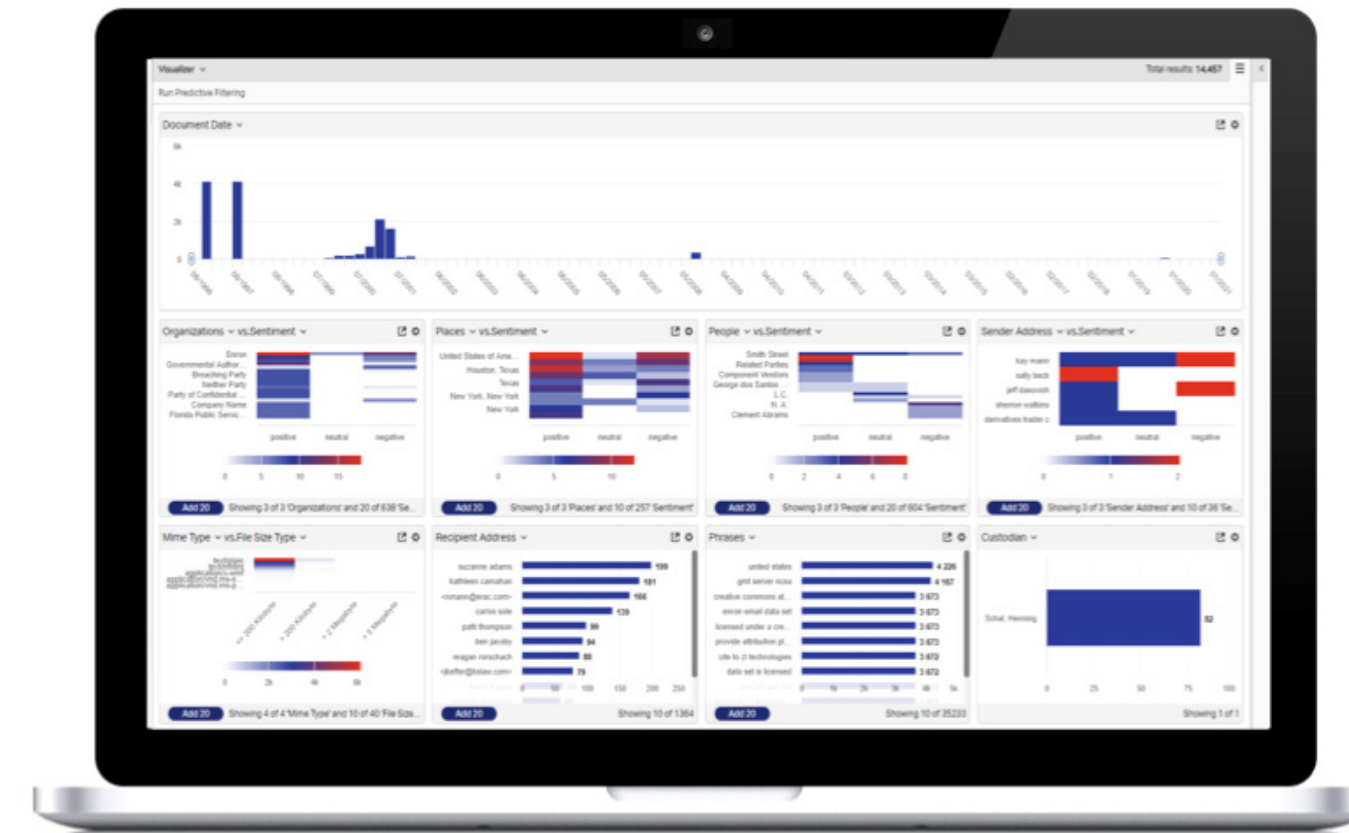
- Easier assessment of patterns within review data
- Detect anomalies such as outliers and missing data

Axcelerate Visualizer Heat Maps description (21.2)

- Overlay any non-binary analytics data on any other non-binary analytics data
- Turns visualization into fast and effective analytics
- Use as part of assessing initial collections – e.g. map file type against file size to better understand data volume
- Use as part of review – e.g. map custodians against fact vs. opinion analysis to see who is prone to unsubstantiated assertions

[Read the blog](#)

[View the users guide \(pg 157 to 171\)](#)  
[MySupport login credentials required](#)



## 2021 Enhancements - Better, faster data privacy (21.4)

RegEx and PII detection enhancements to:

- Streamline PII, PCI and PHI detection and redaction
- Safeguard against non-compliance with data privacy laws
- Improve ease and accuracy of PII detection for DSARs / SRRs



### 2021 enhancements

### Description

#### Enhanced RegEx

RegEx including pre-configured common strings and custom strings now accessed through the actions menu

#### Expanded pre-configured strings

Pre-configured PII strings speed review by auto-detecting all instances of the PII, PCI and PHI of interest to you

### Accelerate pre-configured strings

- Passport #s
- Medicare #s
- EIN
- Birthdate
- Taxpayer ID #s
- Email addresses
- Credit Card #s
- SSN #s exact
- SSN #s fuzzy
- More coming in 2022

## 2021 Enhancements - More inclusive review – Excel\* (21.2)

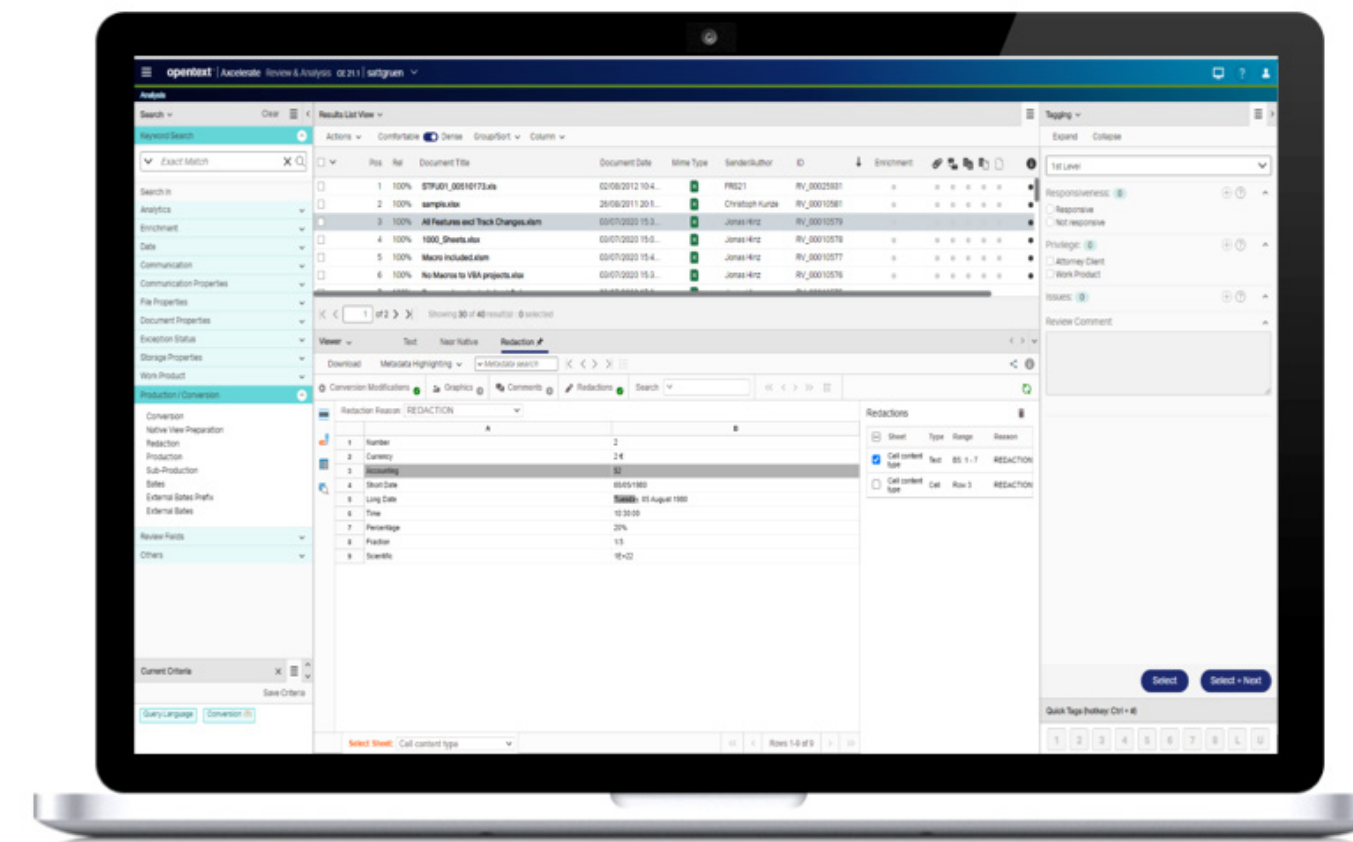
View and redact Microsoft® Excel® data (21.2 and 21.3)

- Excel displayed in a familiar spreadsheet layout
- Use Axcelerate's enhanced RegEx to redact via pre-configured or custom strings:
  - Redact any cell or selection of cells
  - Redact any row or selection of rows
  - Redact any column or selection of columns
  - Redact across individual worksheets or workbooks
  - Cannot redact within sheet names or charts
- Produce in native format with redactions intact
- Axcelerate's auto-QC encompasses Excel redactions

\* Private Cloud and OnDemand only

**View the users guide (pg 353 to 358)**  
**MySupport login credentials required**

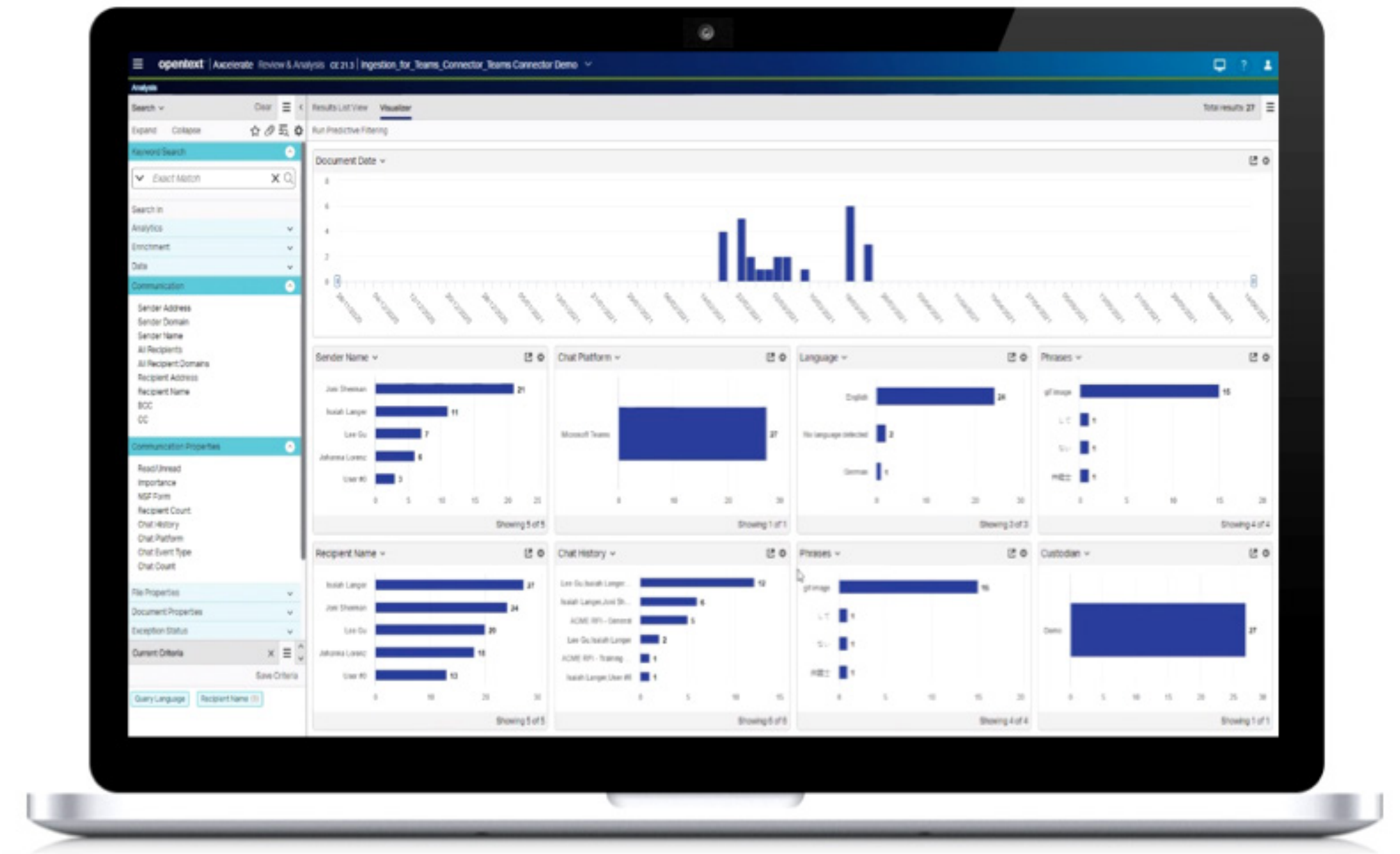
**Watch the how to video**



## 2021 Enhancements - More inclusive review – chat data challenges (21.all)

Chat data challenges for eDiscovery and investigations

- Over 600 Billion business chat messages in 2020
- But, numerous variations despite dominance of Teams®
- Group chat and loose chat must be included
- Reactions, replies, leave / join events reveal context
- Attachments can be critically relevant or spurious
- Need to review in familiar layout
- Must be included with all data for unified view of review sets and inclusive analytics

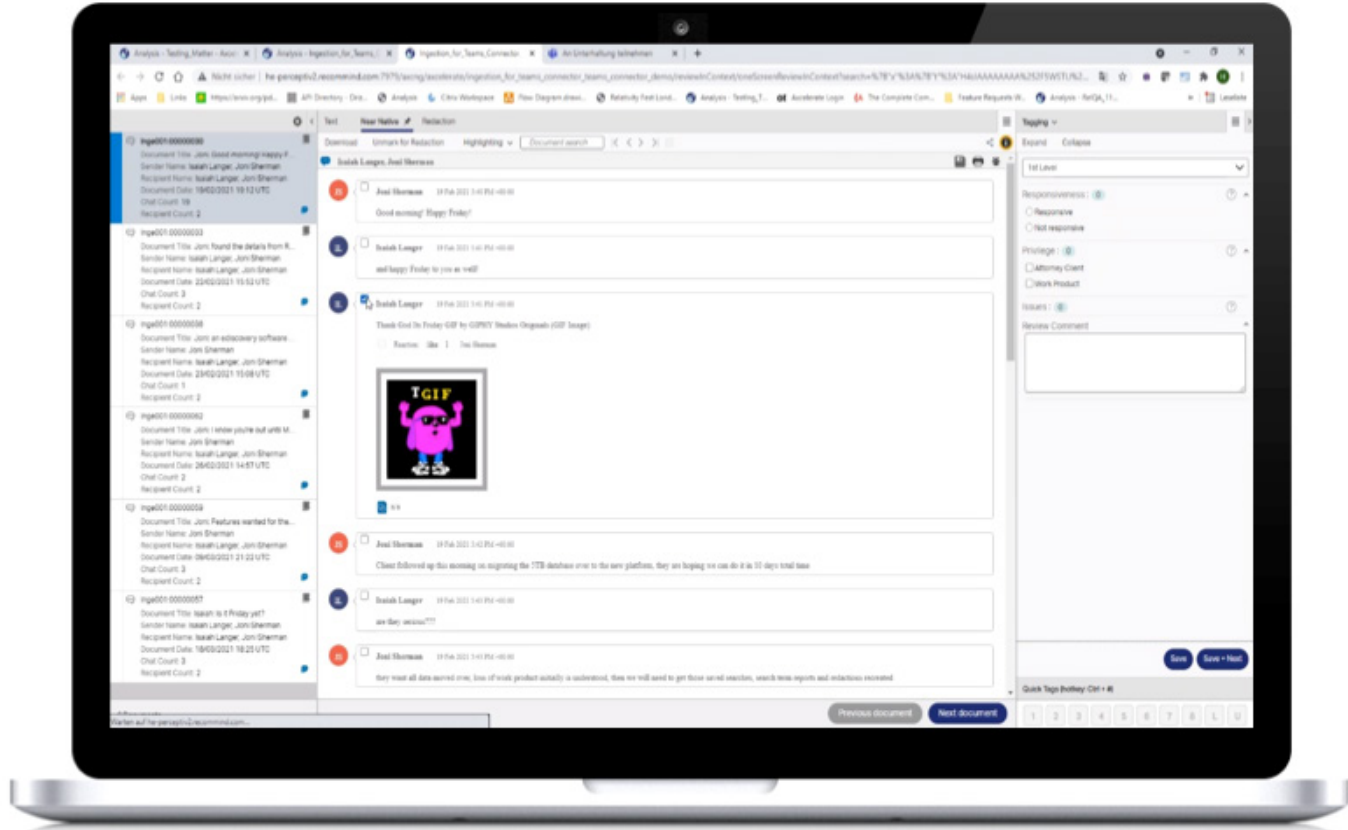


## 2021 Enhancements - More inclusive review – chat data support (21.all)

2021 enhancements	Description
Participant panel (21.4)	Easily see all participants in a thread
Hover effects (21.4)	Hover on initials to see names Hover on “i” for more info on thread
Perspective (21.4)	Click on a person to assign a dedicated color to track them easier
Chat deduplications (21.4)	Dedupe chat history to reduce volume
Collapse chat (21.3)	For review managers – see the broad picture to inform review mgmt. decisions
Split chat by time (21.2)	Break chat down into time blocks to narrow volume that requires review
Chat activities – reactions, leave / join events etc. (21.2)	Include reaction emoticons, leave / join events etc. for inclusive review
Chat attachments (21.2)	Include attachments for inclusive review
Attachment preview (21.4)	Avoid time on irrelevant data
Cellebrite (21.3)	Loose chat from smartphones

**Read the blog**

**View the how to video**



## Related resources

[Axcelerate product page](#)

[Axcelerate product overview](#)

[Axcelerate predictive coding solution overview](#)

[eBook - The anatomy of an efficient document review](#)

[Axcelerate video - driving down the cost of eDiscovery](#)

[Blog - How to handle chat data in eDiscovery and investigations](#)

[Axcelerate Investigation product page](#)



### About OpenText

OpenText, The Information Company, enables organizations to gain insight through market leading information management solutions, on-premises or in the cloud. For more information about OpenText (NASDAQ: OTEX, TSX: OTEX) visit [opentext.com](https://www.opentext.com).

**[opentext.com](https://www.opentext.com)**

[Twitter](#) | [LinkedIn](#) | [CEO Blog](#)

Copyright © 2022 Open Text. All Rights Reserved. Trademarks owned by Open Text. For more information, visit: <https://www.opentext.com/about/copyright-information> 12/22 21934.EN