

■ Data Sheet

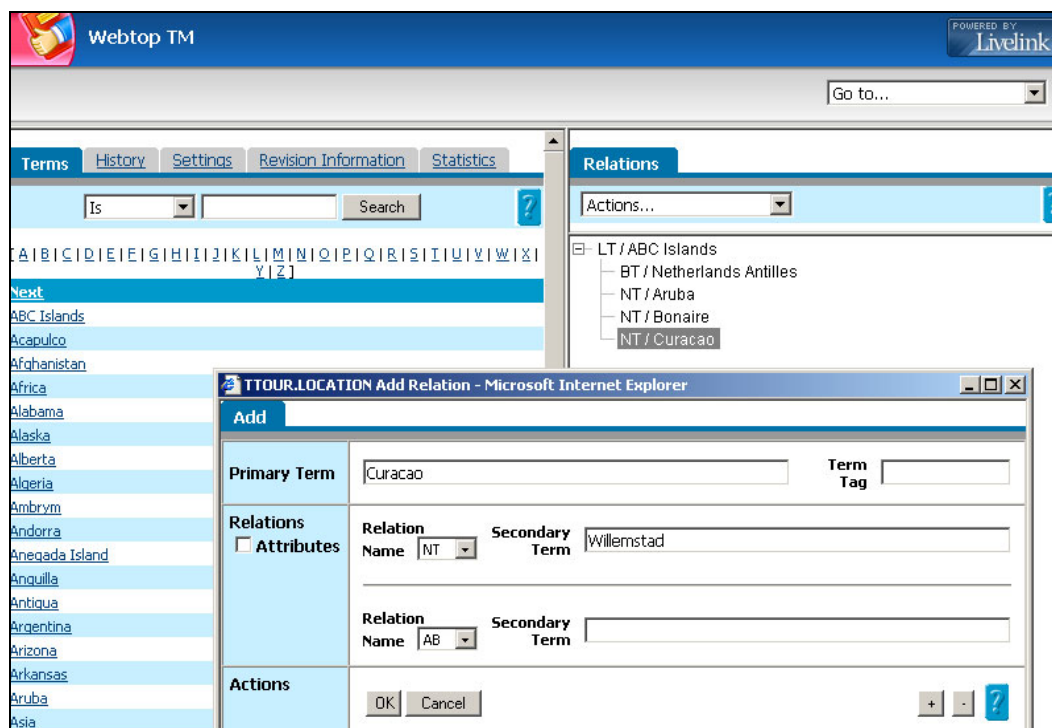
# Open Text Collections Server Webtop Thesaurus Manager

Terminology maintenance simplified

Open Text Collections Server Webtop Thesaurus Manager (Webtop TM) is a flexible application interface for browsing and maintaining terms and relations that are managed in an Open Text Collections Server Thesaurus database. Webtop TM is a module of the Webtop Suite, and can be added to an existing Webtop configuration or purchased separately.

Using a thesaurus with your Collections Server application improves retrieval capabilities by providing search assistance to users through term browsing, term selection, hierarchical term navigation, and search redirection with term switching. Thesauri can also be applied to ensure consistent standard forms of entry for classification and category fields. The thesaurus supports 13 ANSI standard relation types including: cross-references, broader and narrower terms, related terms, abbreviations, scope notes and history notes. Webtop TM is a Web-based interface for terminology specialists to add, update, and delete thesaurus terms and relations.

Built using Java and Java Database Connectivity (JDBC), Webtop TM provides standard Web-based access to Thesauri, extending the application development possibilities and preserving your significant investment in database content.



## Manage concepts in context

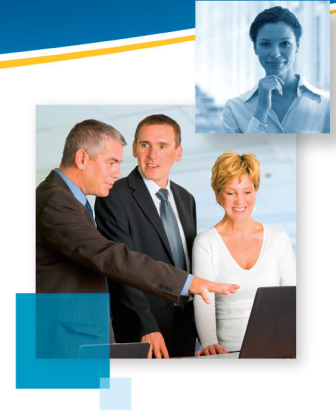
By providing an easy-to-use Web interface, Webtop TM lets terminology specialists focus on intellectual aspects of managing concepts rather than on mechanics. There is virtually no learning curve, because Webtop TM provides flexible Web forms and simple hierarchical navigation to facilitate intuitive user searching and term maintenance. The interface showcases the unique features of Thesaurus Manager, such as reciprocation and transitivity, with complete access to navigate and modify terms and relationships.

## Standard technology integrates easily

Webtop™ employs standard technologies in a public interface to secure IT approval and reduce the learning curve for new developers. The three-tier architecture supports distributed and heterogeneous operating environments. Best of all, Webtop™ is schema-aware and fully configurable for out-of-the-box access to existing databases. The relation-types and usages that you have defined, along with all existing terminology, is immediately accessible when Webtop™ is installed.

## Features

- Browse thesaurus terms and relations.
- View the lead term list next to the thesaurus relations for a selected lead term.
- Navigate hierarchical thesaurus structures.
- View a list of all top terms in a thesaurus hierarchy.
- Add, update, and delete terms and relations.
- Use a single form to add all relations for a term at one time.
- Define custom browse displays by selecting relations and levels in a hierarchy.
- Store custom browse displays to use for each thesaurus maintenance task.
- Facilitate knowledge discovery by applying enterprise taxonomy to database content.
- Use session history to keep track of terms viewed and to quickly return to previous term pages.
- Use revision histories to manage terms based on add date, modified date, and user ID.
- View thesaurus statistics including the number of terms and type of relations in each thesaurus.



# OPEN TEXT

The Content Experts™

Sales	Corporate Headquarters	European Headquarters
www.opentext.com sales@opentext.com  North America Sales 1 800 499 6544  International Sales 1 8004996 5440	275 Frank Tompa Drive Waterloo, ON N2L 0A1 Canada  Phone: +1 519 888 7111 Fax: +1 519 888 0677	Technopark 2 Werner-von-Siemens-Ring 20 D-85630 Grasbrunn Germany  Phone: +49 89 4629 0 Fax: +49 89 4629 1199

If you are an Open Text partner or customer, visit [online.opentext.com](http://online.opentext.com) for more information about this and other Open Text solutions.

Open Text is a publicly traded company on the NASDAQ (OTEX) and the TSX (OTC).