

GIS solutions for Government

Linking GIS data to supporting documents, government officials gain rapid access to data with which to make informed decisions.

Maximize return on GIS investments by linking documents to geographic information

Increase productivity through unified access to enterprise content and GIS data

Simplify and accelerate access to information sources by clicking on map location

Associate departments and processes together in a common mapping interface

Simplify how departments manage, collaborate, publish, and share information

GIS Solutions for Government

Microsoft
GOLD CERTIFIED
Partner

Making Spatial Information Available Across the Enterprise in Government

All levels of government manage an enormous volume of physical records that are required for conducting government business, including printed engineering drawings, charts, emergency plans, inspection reports, legal agreements, etc. In many instances, the information concerns a geographic location. With the increasing need to leverage this information for making decisions, knowledge of geographic context of content becomes a critical requirement.

The Business Challenge

Governments face increasing requirements to enhance the service they deliver to citizens and businesses, balanced with tightening security, policies, and budget restrictions. The volume of available electronic information has expanded on an exponential basis, along with public demands for on-line access to the information, for more visibility into the processes that govern policy- and decision-making, and for the protection of individual information.

All levels of government manage an enormous volume of physical records that are required for conducting government business, including printed engineering drawings, charts, emergency plans, inspection reports, legal agreements, etc. In almost every instance, the information concerns either a geographic location, e.g., an asset with a physical location or an activity associated with a physical location. With the increasing need to leverage this information for making decisions, knowledge of this geographic relationship becomes a critical requirement.

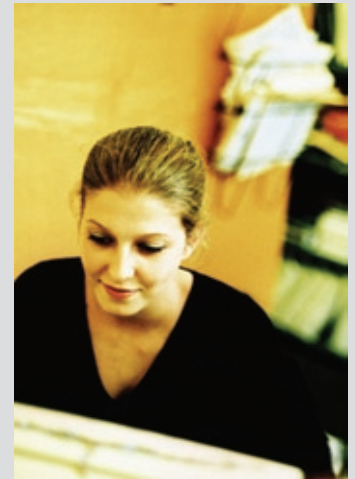
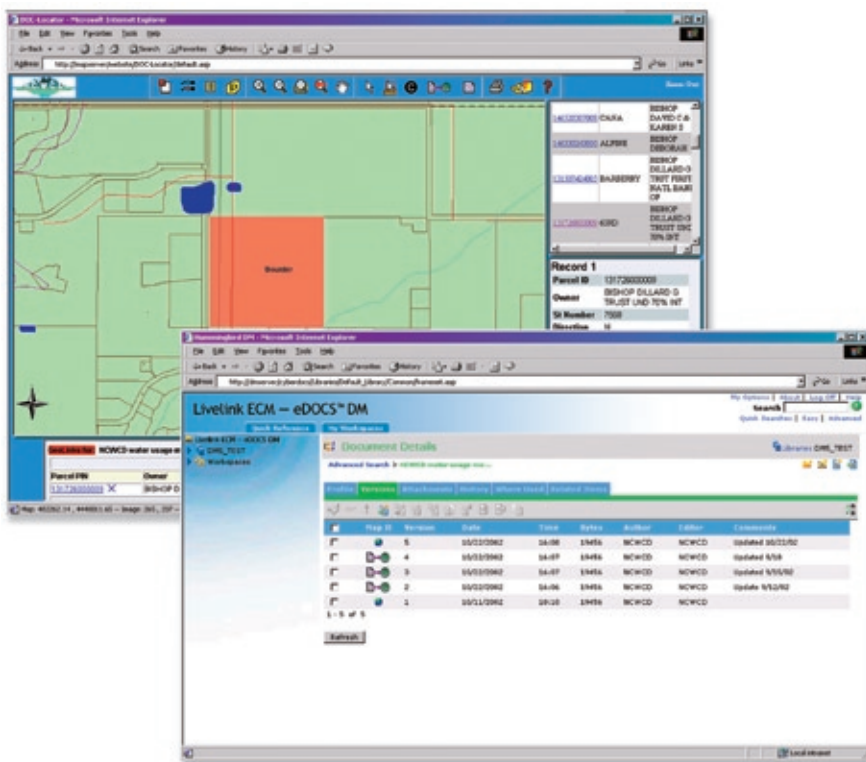
Many government agencies deploy Geographic Information System (GIS) technologies to manage spatial data relating to land parcels, transport and utility networks and much more. By linking the GIS data on a land parcel to supporting documents such as engineering drawings, scanned deeds or construction contracts, government officials gain rapid access to data with which to make informed decisions.

Other government organizations are facing increasing requirements for e-government applications, national security, airport protection, engineering project planning and management, and GPS-enabled information gathering for police, security, and maintenance. Using GIS as a means to share information across traditional inter-departmental and cross-agency boundaries and introducing the ability to find information in minutes has enormous benefits. Additionally, the content such as documents, records, reports, and images for each department and agency can remain secure within a document management system. With content rules and security in place a common reference, i.e., the map, and context between departments and agencies can exist. In this way, information is shared consistently within guidelines while contextual access to information is vastly improved.

Open Text Delivers Enhanced Geographic Knowledge to Governments

Livelink ECM – eDOCS™ for ESRI delivers a simple way for government organizations to geographically link documents to GIS maps, providing easier access to information and giving the user the ability to select a point on a map and then access all the related information through a single view. This allows engineers, law enforcement, security personnel, utility workers, contractors, and inter-agency departments to work from a single map.

The ability to know a document's geographic relationship is as significant as the information contained in the document. Knowing the geographic reference adds contextual knowledge to the content of a document and allows a comprehensive understanding that leads to faster and better decisions.



GIS solutions for Government
Linking GIS data to supporting documents, government officials gain rapid access to data with which to make informed decisions.

Maximize return on GIS investments by linking documents to geographic information

Increase productivity through unified access to enterprise content and GIS data

Simplify and accelerate access to information sources by clicking on map location

Associate departments and processes together in a common mapping interface

Simplify how departments manage, collaborate, publish, and share information

Microsoft
GOLD CERTIFIED
Partner

GIS systems have traditionally been focused on the relationship of data elements to a geospatial coordinate, typically represented by a location on a map. While this has provided a wealth of information for those users who require mapping-related information to execute their job function, it has been limited to a select set of individuals that possess the knowledge to design, upload and work with this information. Thus, the acquisition and implementation of a GIS system can be a costly expenditure that is leveraged by only a select group of individuals. Gaining the maximum benefit from GIS requires that the system be used by many people in the organization to extend their ability to manage and deliver information. The missing link to this extended benefit is the integration of documents and content with the GIS system.

With Livelink ECM – eDOCS for ESRI, integrating GIS with documents provides a powerful way to access business critical information. GIS data combined with other documents escalates the combined language of geography and knowledge to a strategic role in the government organization. Giving a user the ability to select a point on a map and then display a single view of all related information delivers an easy way to disseminate critical business information to a broader government audience. While this seems a simple idea, it has significant benefits by enabling the full power of enterprise content lifecycle management.

Summary

By associating documents with a geospatial location, government users of a GIS system are given a more complete picture of the information associated with a location on a map. Information management is not one-dimensional, but must be multi-dimensional, bringing together the GIS data with other documents that then enable all users in an organization to access the information they need to do their job. Integrating documents with a GIS system brings GIS functionality out of the back room and into the mainstream functions of government.



Livelink ECM – eDOCS for ESRI delivers a simple way for government organizations to geographically link documents to GIS maps, providing easier access to information and giving the user the ability to select a point on a map and then access all the related information through a single view.



Sales	Americas	Europe	Asia/Pacific	
www.opentext.com sales@opentext.com	United States 100 Tri-State Int'l Pkwy Lincolnshire IL 60069 Phone: 847-267-9330 Fax: 847-267-9332	Germany Technopark 2 Werner-von-Siemens-Ring 20 D-85630 Grasbrunn Phone: +49 89 4629 0 Fax: +49 89 4629 1199	United Kingdom Grosvenor House Horseshoe Crescent Beaconsfield Buckinghamshire HP9 1LJ Phone: +44 1494 679700 Fax: +44 1494 679707	Australia Level 12 65 Berry Street North Sydney, NSW 2060 Phone: +61 2 9026 3400 Fax: +61 2 9026 3455
North America Sales 1-800-499-6544	International Sales Toll Free: 1-800-538-7723 +800 4996 5440			

If you're an Open Text partner or customer, visit <http://online.opentext.com> for more information about this and other Open Text solutions.

Open Text is a publicly traded company on the NASDAQ (OTEX) and the TSX (OTC).