

OpenText CAD Manager for Bentley® MicroStation®

Bringing engineering data to the enterprise

OpenText CAD Manager for Bentley MicroStation is designed to simplify the management of engineering data in OpenText Document Management or OpenText Content Lifecycle Management. Maintaining work-in-progress drawings in OpenText Content Server provides engineers with a secure, collaborative environment in which they can work. Engineers can use Content Server tools, such as advanced workflow capabilities or Advanced State Management ProcessFlows to route documents for review and approval.

CAD Manager for Bentley MicroStation provides seamless access to drawing data in Content Server via two interfaces: a) the familiar MicroStation interface which allows engineers access within their application or b) the Batch Processor interface which allows any user, such as document controllers, the ability to manage bulk drawing data. Complex relationships between engineering drawings, including support files, are stored in Content Server by means of an intuitive structure that differentiates between parent relationships, child relationships, and more. Metadata, such as file block fields, can be mapped and updated as files are checked in or checked out, making it easy to search and manage the data.

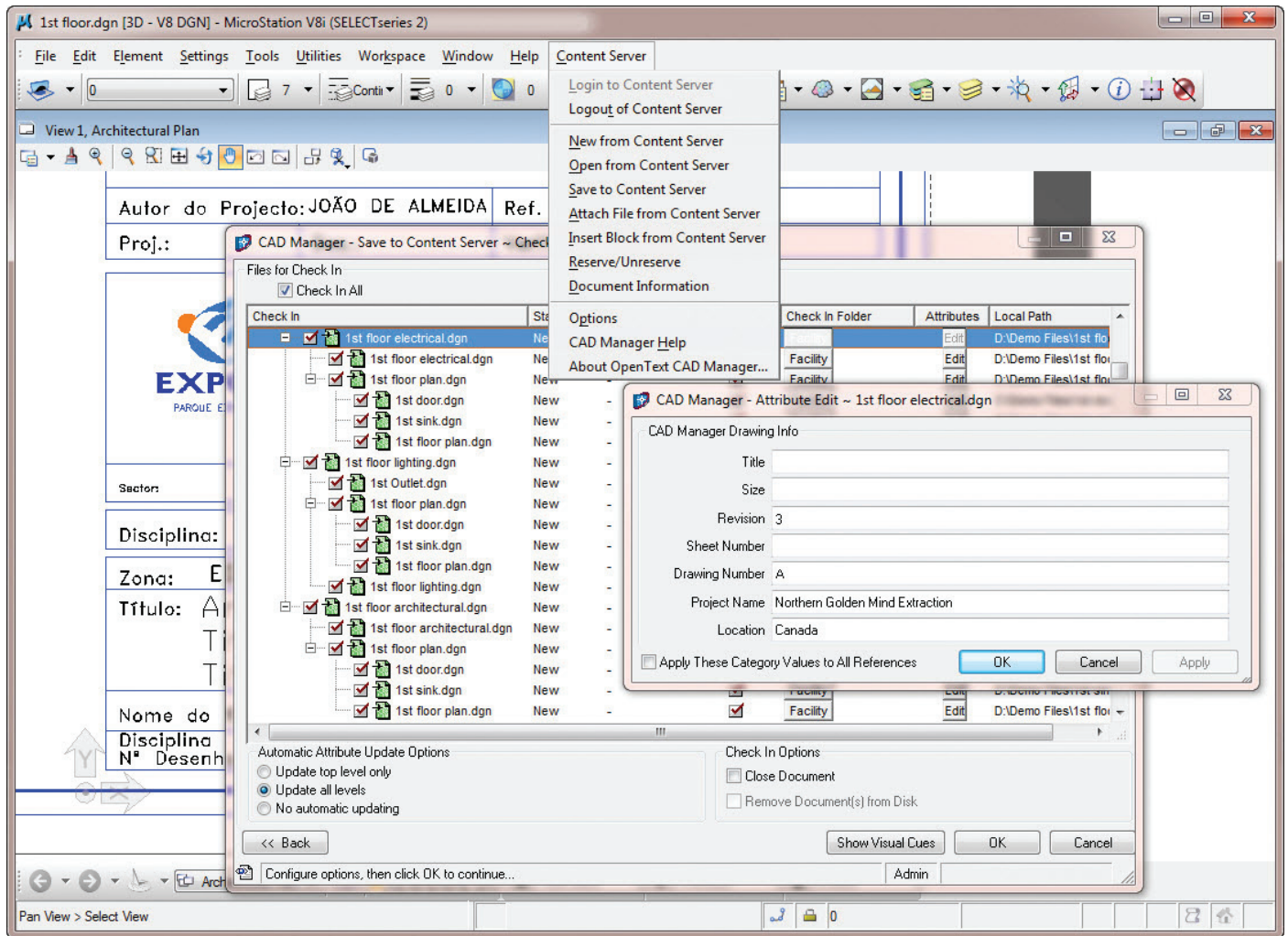
The web-based Content Server interface provides secure access to engineering documents from anywhere, at any time, using any standard web browser. Also, by using integrated visualization and annotation tools, users can view, mark-up, and print drawings without need for the CAD application.

Reduces errors and saves time

CAD Manager for Bentley MicroStation provides direct interoperability of drawing data with a controlled central repository. During check-in, data is mapped directly from the drawing, PDF file, or Excel file, to Content Server metadata fields, which reduces errors and allows users to save time by leveraging powerful navigation and search capabilities. CAD Manager for Bentley MicroStation ensures that engineers are presented with the information that they need when they need it. They no longer have to go searching for critical support files, since these are automatically made available for download during check-out. Because many CAD add-on modules generate support files that are not referenced within the CAD file, engineers often rely on other supporting documents, such as images and design specifications, to assist in the design process, and it is critical that they have immediate access to this information.

WITH CAD MANAGER FOR BENTLEY MICROSTATION, YOU CAN:

- *Enable efficient control and re-use of designs* through seamless search and access of engineering CAD data via familiar desktop CAD application menu
- *Ensure referential integrity* within CAD data by storing CAD data references and support file references within Content Server
- *Optimize interactions* with Contractor documents/drawings by providing an interface to batch process files during check-in/check-out.



Leverages existing investments

CAD Manager for Bentley MicroStation creates an infrastructure in Content Server to manage engineering documents and reference files for multiple CAD formats, leveraging your existing investments in both MicroStation and Content Server.

Encourages user adoption

CAD Manager for Bentley MicroStation enables engineers to interact directly with the Content Server repository from within the MicroStation interface or via the Batch Processor, encouraging adoption of Content Server for engineering.

Provides secure access from anywhere

CAD Manager for Bentley MicroStation adopts the Content Server permission model, so engineers can securely access relevant information at any time from any standard web browser.

Features

- Provides engineers access from within MicroStation and non-CAD users access from within the Batch Processor to Content Server data, so they can:
 - Browse the Content Server directory structure
 - Search for specific files using file names or attribute/title block data

- Check-in/check-out drawings and reference files directly from Content Server
- Save new drawings directly to Content Server, or add versions and update reference files
- Check for duplicate files to ensure unique file naming
- Import or export reference files stored in Content Server
- As data is shared between MicroStation files and Content Server, users can:
 - Create template schema maps to map data between MicroStation and Content Server

- Control the bi-directional update of data via the mapping templates
- Map MicroStation title block data to Content Server categories/attributes
- Reflect updates of Content Server attribute data in MicroStation drawings
- Map additional drawing file metadata to custom attributes
- Map PDF File Properties values to Content Server category attributes
- Use the Controlled Revision Tracking (CRT) integration to view multiple Title Block field values, and any additional attributes, in the CRT Title Search Field and display Column. This is accomplished by concatenating multiple attribute values during the check-in process.
- Define support file relationships during check-in to make files automatically available for download and editing during check-out. These file relationships can be defined between any files that CAD Manager checks into Content Server.
- Provides users working within Microstation the ability to access general information about documents stored in Content Server:
 - View documents' version histories.
 - View a document's parents, children, and all related files.
 - Track the MicroStation version associated with a MicroStation document.
 - Select files as saved or with latest reference files.
 - Check Fonts during check-in and check-out.
 - Insert raster images from Content Server, enabling users to select the insertion point and scale images manually after insertion.
- Enables Content Server users with the ability to:
 - View intelligent data about engineering documents.
 - Access accurate title block data information and other drawing information.
- View the status of a drawing and its check out information.
- View a document's parent, children, and all related files via the Information tab.
- Review audit trails of changes to drawings, including changes to metadata values, to provide greater accountability.
- View, annotate and collaborate on documents when used in conjunction with Java-based Visualization and Annotation tools.
- Provides power and flexibility:
 - Support multiple languages.
 - Use MicroStation or Batch Processor for uploading/downloading multiple files.
 - Insert custom events anywhere in the check-in/check-out process through CAD Application or Batch Processor.
 - Use the event trigger capability to add custom processes such as quality checking, renditioning, and data extraction from other applications as part of the check-in and check-out processes. ■

www.opentext.com

NORTH AMERICA +800 499 6544 ■ UNITED STATES +1 847 267 9330 ■ GERMANY +49 89 4629-0
UNITED KINGDOM +44 0 1189 848 000 ■ AUSTRALIA +61 2 9026 3400